



789 Church Road Indented Head VIC

3 2 3

The Feel:

Exuding a feeling of true country charm right from its auto gated entry, this delightful family home on a leafy one-acre block relishes an unhurried, stress-free, and totally relaxed lifestyle. Nestled amongst majestic greenery, a three-bedroom homestead-style residence resonates traditional charm with a signature wraparound verandah, exposed brick and beams, ornate ceiling roses, and lead light detail. A step-down lounge warmed by a wood fire heater adds to the relaxed ambience, while outdoors the sprawling surrounds incorporate an inviting alfresco zone, plenty of play space for the kids, generous storage, and a designated office that's ideal for home business operators. Just 1km to the glassy waters of Half Moon Bay, this is an offering of rare beauty and tranquillity.

The Facts:

- An elegant family home relishing in the privacy of its 4,000sqm (approx.) setting
- Down a quiet country lane, the property is introduced by auto gates & majestic greenery

[For full version visit the website](https://www.bellarineproperty.com.au/84614)

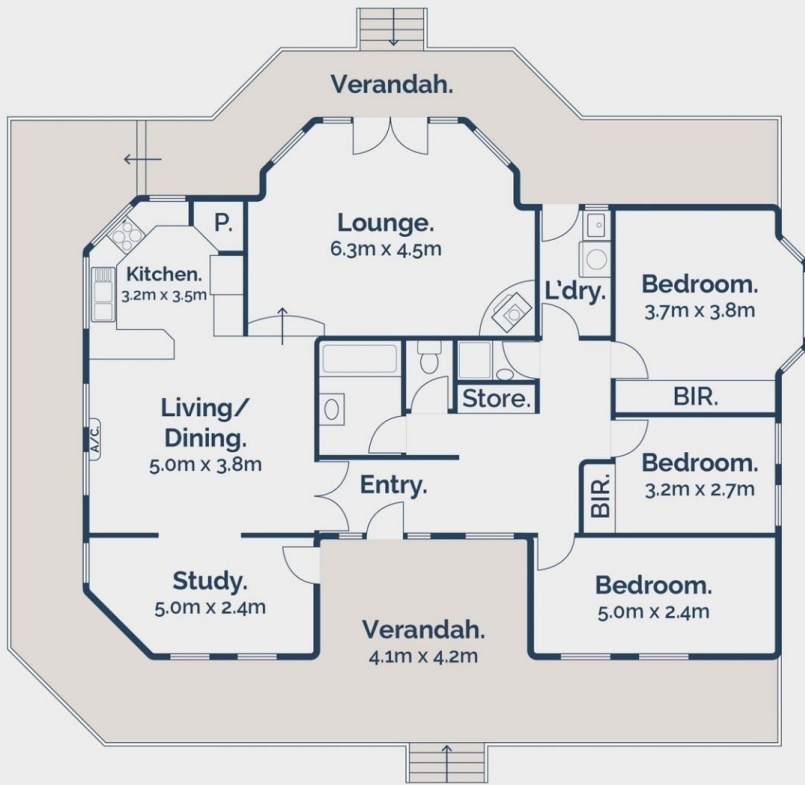
Type : House
Price : \$1,200,000 - \$1,320,000
Land Size : 4000 sqm
View : <https://www.bellarineproperty.com.au/84614>
 89



Lee Martin
 03 5297 3888



Andrew Kibbis
 03 5254 3100



Ground Floor.

 3
  2
  3



Site Plan.

789 Church Road, Indented Head

bellarine  property