

95 Murradoc Road Drysdale VIC

4 🏠 3 🚗 8 🚗

The Feel:

Situated on a sprawling 6,046sqm (approx.) landholding, this commanding 4-bedroom plus study residence stands as a magnificent legacy of a much-loved family home, while also offering significant development upside within Drysdale's thriving industrial precinct. Underpinned by Commercial 2 Zoning, the site benefits greatly from a strategic frontage to Murradoc Road and proximity to the Drysdale Bypass, while an 176m depth invites buyers to take inspiration from neighbouring properties and construct a multi-warehouse development (STCA). With the recent expansion of the northern Bellarine townships, there's no better time to establish a substantial footprint in this rapidly growing area.

The Facts:

- Large-scale commercial or residential opportunity in the heart of Drysdale's industrial precinct
- Substantial landholding of 6,046sqm (approx.), backed by Commercial 2 Zoning
- Established commercial area, surrounded by

[For full version visit the website](https://www.bellarineproperty.com.au/82705)

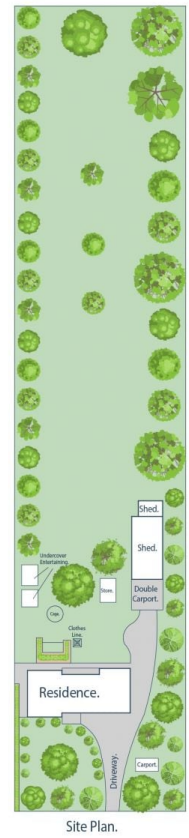
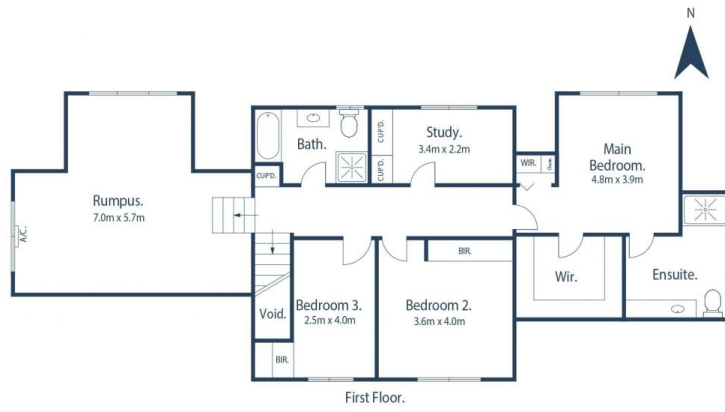
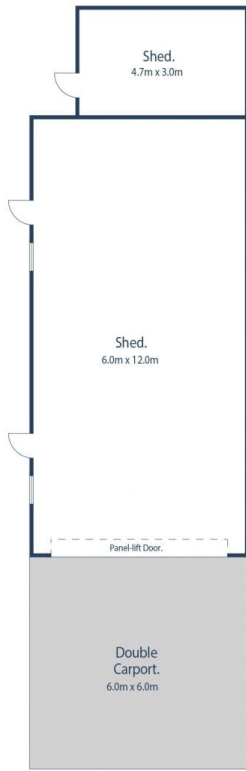
Type : House
Land Size : 6046 sqm
View : <https://www.bellarineproperty.com.au/82705>
 44



Lee Martin
 03 5297 3888



Christian Bartley
 03 5254 3100



4 3 11

95 Murradoc Road, Drysdale

Scale in metres. Indicative only. Dimensions are approximate. All information contained herein is gathered from sources we believe to be reliable. However we cannot guarantee its accuracy and interested parties should rely on their own enquiries.