



## 42 Corone Drive Clifton Springs VIC

3 1 1

### The Feel:

In a peaceful position overlooking the verdant expanse of the Clifton Springs Golf Course, this 3-bedroom family classic presents as an exciting discovery for buyers with their minds firmly on the future. Presented to market for the first time in almost 40 years and perfectly primed for its next exciting chapter, you'll be inspired by the enormous scope this vintage gem offers with its leafy 638sqm (approx.) landholding, retro interiors, and exceptional lifestyle location. Whether your plans include cosmetic enhancements, a full renovation, or a complete rebuild, this is an unrivalled opportunity for buyers to secure their position in a tranquil bayside setting.

### The Facts:

- Classic family home, occupying a generous 638sqm (approx.) parcel
- Tranquil bayside setting with picturesque rear aspect over the Clifton Springs Golf Course
- Original interiors offering 3 fitted bedrooms, including master with WIR
- Generous living zone with access to an elevated deck, taking in the verdant outlook

**Price** : \$ 597,500

**Land Size** : 638 sqm

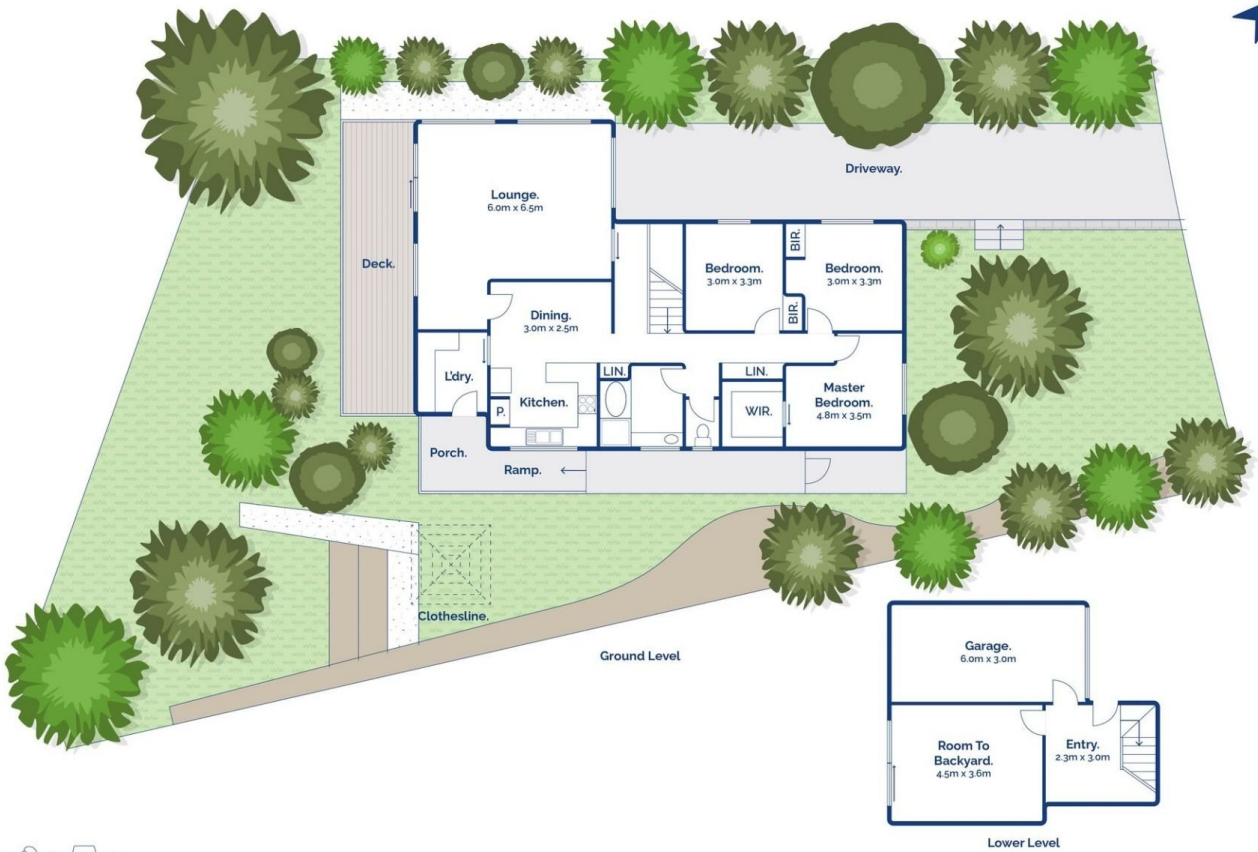
**View** : <https://www.bellarineproperty.com.au/7933066>



**Lee Martin**  
03 5297 3888



**Andrew Kibbis**  
03 5254 3100



3 1 1

## 42 Coronae Drive, Clifton Springs

**bellarine** property  
rentals. commercial. sales. projects.

Whilst [bwm.com.au](http://bwm.com.au) has made every attempt to ensure the accuracy of the floor plan contained here, measurements are approximate and no responsibility is taken for any error, omission, or mis-statement. This plan is for illustrative purposes only.