



**512-520 Grubb Road Wallington VIC**

4 2 6

#### The Feel:

An unrivalled lifestyle of space, scenery, and rural serenity is ready and waiting to be discovered with this rare 10.12ha (approx.) landholding superbly situated in the heart of the Bellarine. The perfect blank canvas on which to build a dream coast-meets-country sanctuary (STCA) backdropped by a picturesque rural outlook, with the surrounding land lending itself to a myriad of lifestyle or farming possibilities. Arguably the region's most conveniently positioned acreage offering, it's a mere 6min drive to the bustling coastal townships of Drysdale and Ocean Grove, while proximity to the Bellarine Hwy places you in Geelong in less than 20mins.

#### The Facts:

- Outstanding opportunity to embrace a tranquil coast-meets-country lifestyle in the heart of the Bellarine
- A rare & exclusive 10.12ha (approx.) site of well-draining land, enhanced by established shelter belts
- Features include an existing 4-bedroom brick house that's ripe for a contemporary renovation to capitalise on the generously proportioned layout
- Also presenting as an idyllic environment for a luxurious

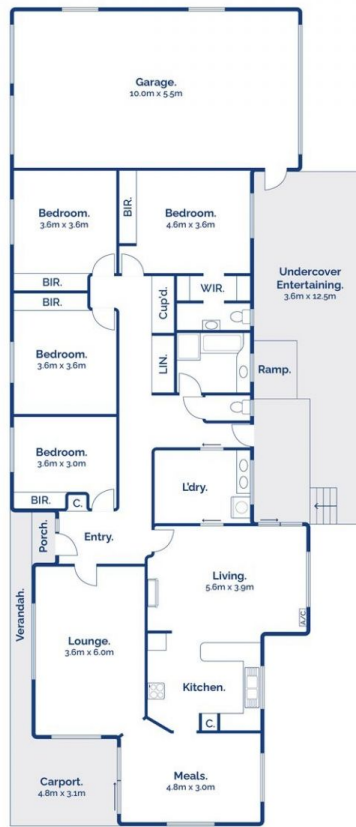
**Price** : \$ 1,840,000  
**Land Size** : 25 Acres  
**View** : <https://www.bellarineproperty.com.au/7810900>



**Lee Martin**  
03 5297 3888



**Toby Lee**  
03 5254 3100



Ground Floor.

4 1 3



Site Plan.

512-520 Grubb Road, Wallington

bellarine **b** property  
rentals. commercial. sales. projects.

Whilst [bwrn.com.au](http://bwrn.com.au) has made every attempt to ensure the accuracy of the floor plan contained here, measurements are approximate and no responsibility is taken for any error, omission, or mis-statement. This plan is for illustrative purposes only.