



7 Horwood Drive Breamlea VIC

4 2 2

The Feel:

Tucked amidst the dunes of Breamlea, with paths weaving through ti-trees leading straight to the beach, discover a beach house that celebrates nature, sustainability, and architectural brilliance. Set over three levels, this tranquil retreat boasts features curated over years of research, echoing both design elegance and environmental consciousness. 7 Horwood Drive offers more than just a home—it offers a lifestyle immersed in coastal beauty and green living. The passive solar design bathes interiors in abundant natural light, with 180' panoramic views that bear witness to both sunrises and sunsets, and the mesmerising night lights of Geelong. Additional features like a detached studio, vast garage, workshop and studio space add to the home's appeal, while the home's energy-efficient features contribute to a quality of life that's nothing short of awe-inspiring.

The Facts:

- Rare opportunity to buy in Breamlea - the most secluded of seaside resorts along this coast
- Front row north position delivers all day sunshine, scenic views, & infinite sense of space

Price : \$ 1,865,000
Land Size : 810 sqm
View : <https://www.bellarineproperty.com.au/7765719>



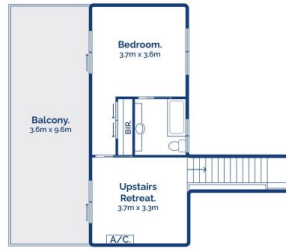
Peta Walter
03 5254 3100



Levi Turner
03 5254 3100



Ground Floor.



Second Floor.



First Floor Studio.



First Floor.

5 2 2

7 Horwood Drive, Breamlea

bellarine **b** **property**
rentals. commercial. sales. projects.

Whilst bwrn.com.au has made every attempt to ensure the accuracy of the floor plan contained here, measurements are approximate and no responsibility is taken for any error, omission, or mis-statement. This plan is for illustrative purposes only.