



2/110 Tomara Drive Connewarre VIC

2 2 1

The Feel:

Impeccably presented and set in the world-renowned and picturesque surrounds of 13th Beach Golf Course estate, this architecturally designed two-storey 2BR townhouse personifies luxury living. The exceptional position harnesses views of the Creek and Beach Courses, only a short stroll to the 13th Beach Golf Clubhouse and the private walking track to the surf beach. Key attributes of this recently renovated home include light-filled open plan living, custom designed kitchen, huge north-facing entertainers' deck, and R/C Aircon and ensuites to two master bedrooms. Amplify your lifestyle in this low-to-no-maintenance 'lock and leave' townhouse, so you're left with nothing to do but play golf and enjoy the coastal lifestyle.

Price : \$ 940,000

View : <https://www.bellarineproperty.com.au/7705809>



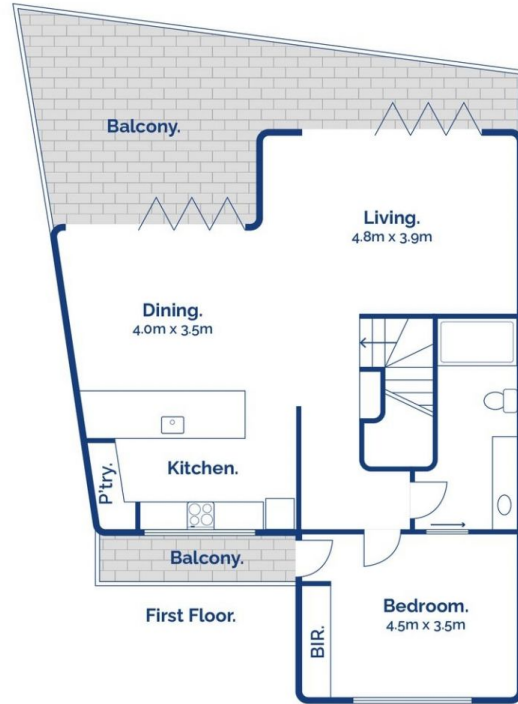
Peta Walter
03 5254 3100



Levi Turner
03 5254 3100

The Facts:

- Secure gated community for stress-free peace of mind
- Approx 100m to the Clubhouse 13th Beach Golf Clubhouse with Café & Restaurant
- Approx 300m to the 13th Beach access track to world class surf beach
- Open plan living upstairs embraces beautiful north aspect



 2
  2
  1

2/110 Tomara Drive, Connewarre

bellarine  property
 rentals. commercial. sales. projects.

Whilst bwrn.com.au has made every attempt to ensure the accuracy of the floor plan contained here, measurements are approximate and no responsibility is taken for any error, omission, or mis-statement. This plan is for illustrative purposes only.