



## 1/22 Everist Road OCEAN GROVE VIC

This near new warehouse offers an outstanding opportunity within one of Victoria's busiest and most popular coastal locations. Positioned in the developing and sought after Ocean Grove industrial estate, the design and layout of the property lends itself to a number of uses.

### The Facts:

- Floor space of 115m<sup>2</sup>
- 90sqm mezzanine perfect for storage and/or office space
- Two off street car spaces
- 5.1m roller door proving outstanding entry clearance and access
- Disabled toilet and kitchenette facilities

All information offered by Bellarine Property is provided in good faith. It is derived from sources believed to be accurate and current as at the date of publication and as such Bellarine Property simply pass this information on. Use of such material is at your sole risk. Prospective purchasers are advised to make their own enquiries with respect to the information that is passed on. Bellarine Property will not be liable for any loss resulting from any action or decision by you in reliance on the information.

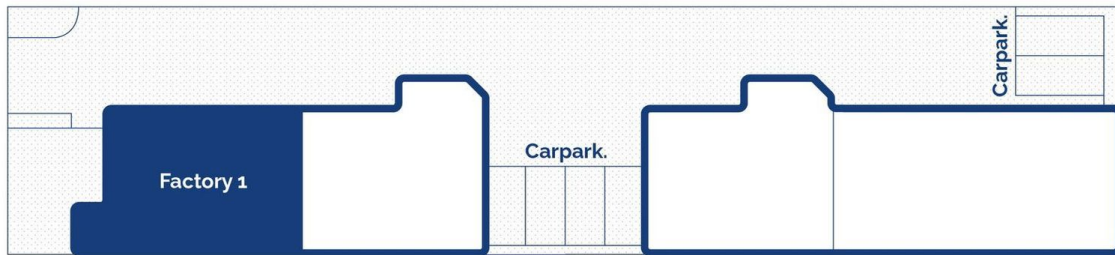
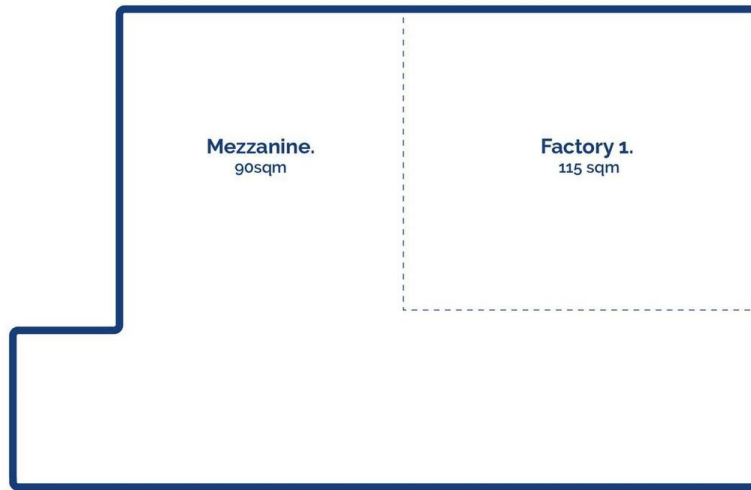
**Price** : \$ 28,000  
**Building Size** : 90 sqm  
**View** : <https://www.bellarineproperty.com.au/7572051>



**Levi Turner**  
03 5254 3100



**Dan Halsey**  
03 5254 3100



Site Plan.

1/22 Everist Road, Ocean Grove

bellarine **b** property  
rentals. commercial. sales. projects.

Whilst [bwrn.com.au](http://bwrn.com.au) has made every attempt to ensure the accuracy of the floor plan contained here, measurements are approximate and no responsibility is taken for any error, omission, or mis-statement. This plan is for illustrative purposes only.