



1-3 Warrenbeen Court Barwon Heads VIC

3 🏠 2 🚗 8 🚗

The Feel:

Very occasionally a truly unique property becomes available within the tightly held Barwon Heads township. Located at the river end of Warrenbeen Court, in one of Barwon Heads most beautiful streets, this classical Rob Pittaway, solid brick, rendered contemporary home is set on 2,653 m² of prized land. The northerly aspect over beautiful private gardens and rolling lawns are a feature of this property with a parkland reserve opposite. A tradies paradise with huge shed, 8 car accommodation, further storage areas and for the family still space for a tennis court and swimming pool. A blue ribbon investment as a proposed 4 lot subdivision (STA) still leaves the existing home on 1,319m².

Land Size : 2653 sqm

View : <https://www.bellarineproperty.com.au/7285543>



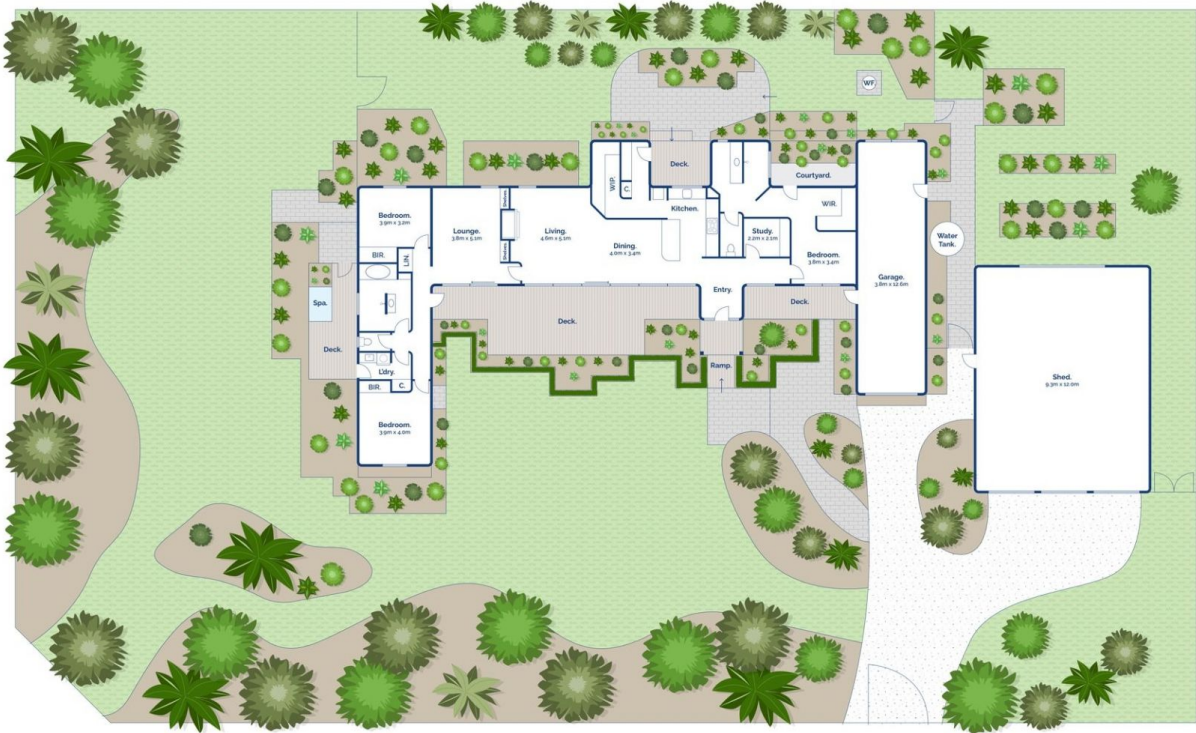
Levi Turner
03 5254 3100



Peta Walter
03 5254 3100

The Facts:

- Quality solid brick contemporary home built to the highest standards.
- High gable and timber lined ceilings with textured rendered interior walls.
- Northerly living rooms open directly to large outdoor alfresco sundeck.
- Beautiful natural light, with large floor to ceiling windows.



3 2 2

1-3 Warrenbeen Court, Barwon Heads

bellarine property
rentals. commercial. sales. projects.

Whilst bwrn.com.au has made every attempt to ensure the accuracy of the floor plan contained here, measurements are approximate and no responsibility is taken for any error, omission, or mis-statement. This plan is for illustrative purposes only.