



120 Pearl Bay Passage St Leonards VIC

4 2 2

The Feel:

Holiday without the hassle, or enjoy laid-back permanent living with this exceptionally designed home, which makes the most of every available space. Designed for minimal maintenance, a compact block offers ultimate lock-and-leave liveability, while the home's flexible layout and generous proportions means there's no need to compromise on space. Open and airy, there's room for the whole family to enjoy, with 4 BRs and versatile living spaces. Located just 700m from the pristine waters of Port Phillip Bay and an easy drive to the St Leonards township, this stylish property is the perfect place to call home, enjoy as a family weekender or secure as an easy-care holiday investment.

The Facts:

- Light-filled double-storey family home in St Leonards' original Seachange Estate
- Extremely low-maintenance with secure fencing, the property offers ultimate lock-and-leave liveability
- Set over 2 levels, soaring ceilings & generous proportions enhance the sense of space
- Open plan living, kitchen & meals offers a well-appointed

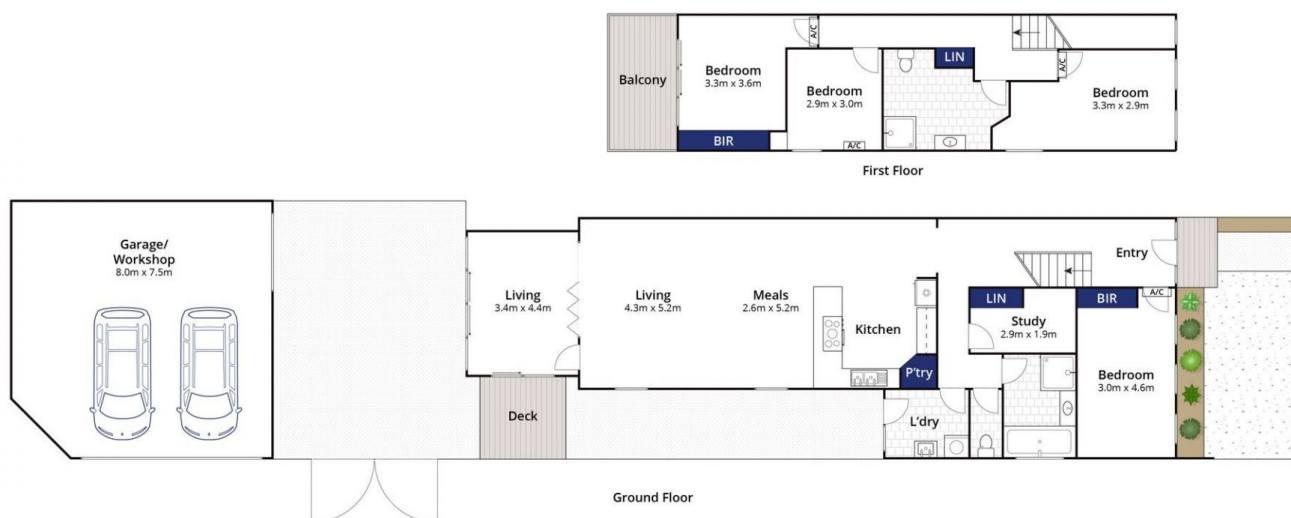
Price : \$ 815,000
Land Size : 301 sqm
View : <https://www.bellarineproperty.com.au/69587>
 25



Christian Bartley
 03 5254 3100



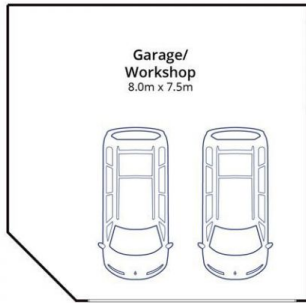
Lee Martin
 03 5297 3888



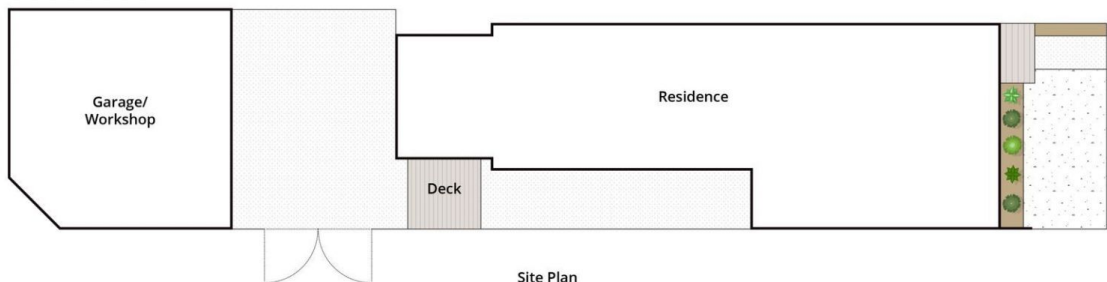
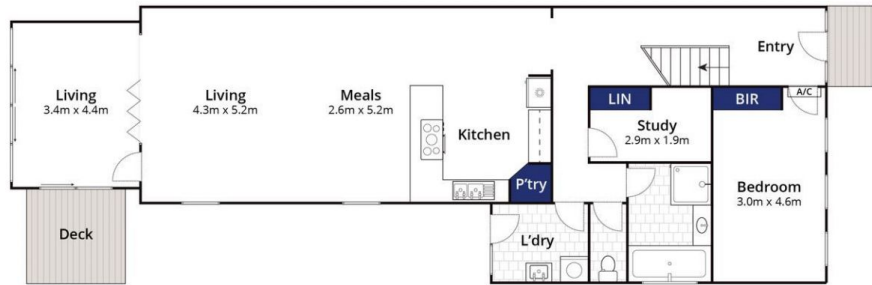
Whilst bwrm.com.au has made every attempt to ensure the accuracy of the floor plan contained here, measurements are approximate and no responsibility is taken for any error, omission, or mis-statement. This plan is for illustrative purposes only.

120 Pearl Bay Passage Street, Leonards

bellarine b property
Rentals | Commercial | Sales | Projects



(Not In Position)



Whilst bwrn.com.au has made every attempt to ensure the accuracy of the floor plan contained here, measurements are approximate and no responsibility is taken for any error, omission, or mis-statement. This plan is for illustrative purposes only.

120 Pearl Bay Passage Street, Leonards

bellarine b property
Rentals | Commercial | Sales | Projects