



82 Kelpie Boulevard Curlewis VIC

4  2  2 

The Feel:

Sophisticated and sleek, this wonderfully presented property is an ideal base for owner-occupiers or a fabulous investment, central to all the region's key attractions. With a light and airy flow, and a relaxed floorplan that maximises space, the 4-bedroom residence presents as a relaxed haven for your tranquil coastal lifestyle. An elevated site offers glimpses of the nearby Corio Bay while north-facing aspect enhances your indoor-outdoor living. This move-in ready, contemporary residence allows you to simply unpack your bags and start taking full advantage of the laidback Bellarine Peninsula lifestyle. Don't delay!

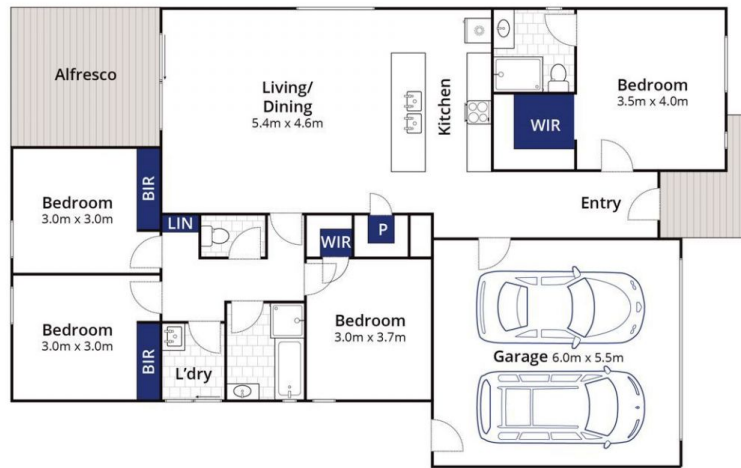
The Facts:

- Less than 2-years-old and presenting as-new, single level home in the popular Coriyule Estate
- Elevated 490sqm site offers glimpses of Corio Bay
- North-facing aspect & high ceilings enhance the sense of space and light
- Open Plan living, kitchen & dining is a central space for family members to come together
- Well-equipped kitchen with stone benchtops, walk-in pantry, & SS appliances including dishwasher, & 900mm

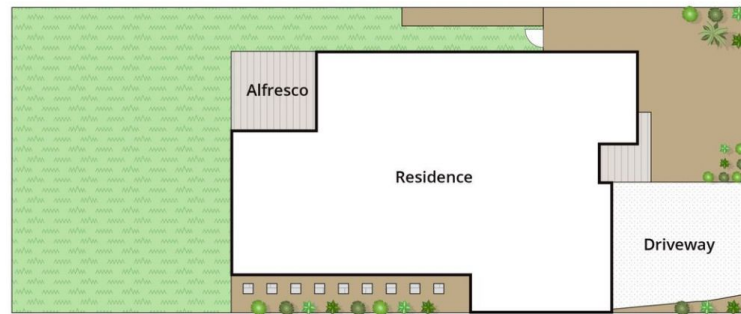
Price : \$ 700,000
Land Size : 490 sqm
View : <https://www.bellarineproperty.com.au/6928421>



Lee Martin
03 5297 3888



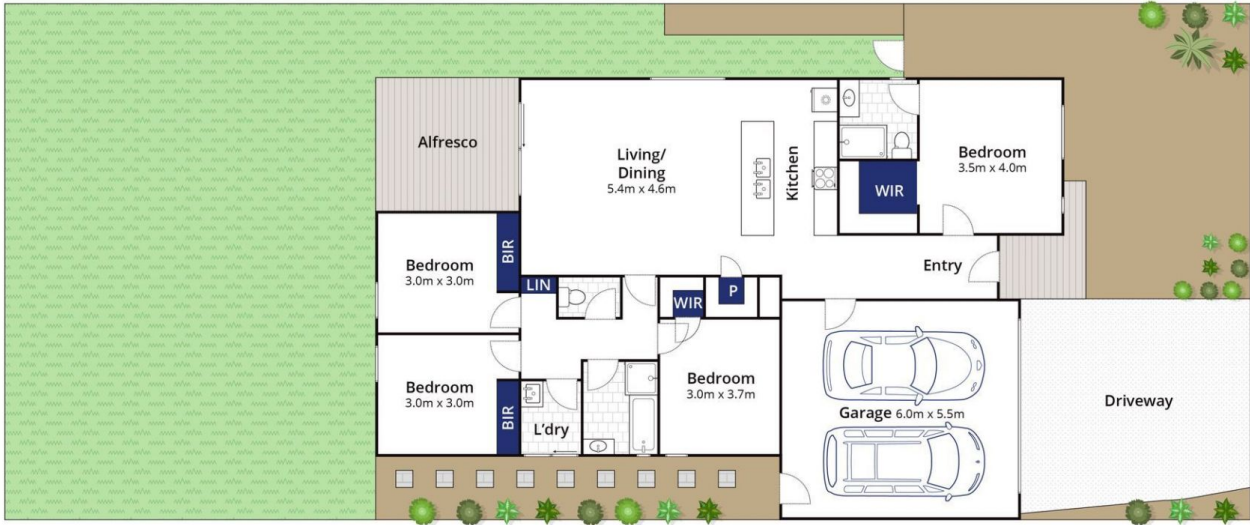
Ground Floor



Site Plan

Whilst bwrn.com.au has made every attempt to ensure the accuracy of the floor plan contained here, measurements are approximate and no responsibility is taken for any error, omission, or mis-statement. This plan is for illustrative purposes only.

82 Kelpie Boulevard, Curlewis



Whilst bwr.com.au has made every attempt to ensure the accuracy of the floor plan contained here, measurements are approximate and no responsibility is taken for any error, omission, or mis-statement. This plan is for illustrative purposes only.

82 Kelpie Boulevard, Curlewis

bellarine property
Rentals | Commercial | Sales | Projects