






4 Grieve Avenue Indented Head Vic

4  3  2 

The Feel:

Presenting an extraordinary opportunity to own a high-end property just meters from the water's edge, this custom-built home has been beautifully designed to capitalise on space, natural light, and a stunning seaside location. Evoking coastal elegance and capturing picturesque ocean glimpses, this impressive residence offers incredible versatility to be enjoyed as a spacious family home, multi-generational accommodation, a low-maintenance weekender, or as a short-term rental income earner. Luxurious and extremely functional, your blissfully tranquil lifestyle awaits.

The Facts:

- Stunning architect designed, custom-built home superbly positioned just 100m from the pristine waters of Half Moon Bay
- Spacious 4BR high-spec residence exudes coastal luxury & refined elegance
- Ideal as a large family home with the option of separate dual living, presenting outstanding potential for guests,

[For full version visit the website](https://www.bellarineproperty.com.au/69270)

Type : House
Price : \$ 1,780,000
Land Size : 339 sqm
View : <https://www.bellarineproperty.com.au/69270>
80



Christian Bartley
03 5254 3100



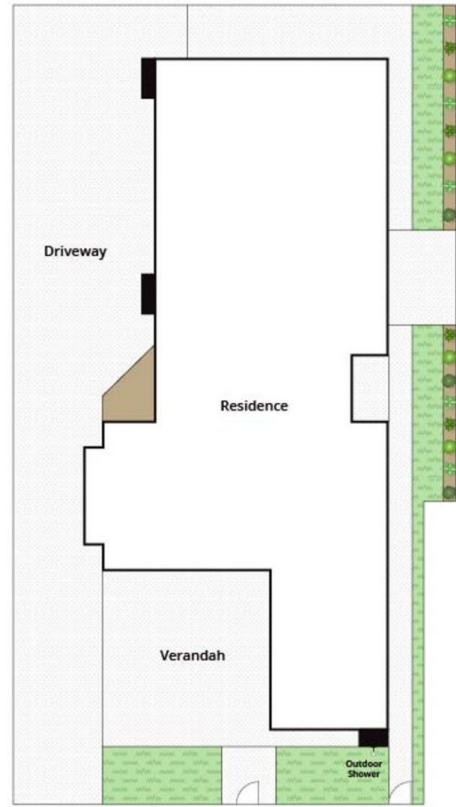
Lee Martin
03 5297 3888



Ground Floor



First Floor



Site Plan

Whilst bwrn.com.au has made every attempt to ensure the accuracy of the floor plan contained here, measurements are approximate and no responsibility is taken for any error, omission, or mis-statement. This plan is for illustrative purposes only.

4 Grieve Avenue, Indented Head