



139 Oceania Drive Curlewis VIC

5 2 2

The Feel:

Situated in one of Curlewis's most convenient pockets, and commanding picturesque views of Corio Bay, this generously appointed family home is sure to appeal to those seeking a lifestyle of space and style. Set across two storeys, the well-maintained home balances sizeable accommodation with multiple indoor and outdoor living zones. Five generous bedrooms include a grand master suite which affords stunning bay views from the private east-facing balcony. An open plan kitchen, living and dining area allows room for the family to come together while an undercover outdoor room offers even more space for entertaining. Within easy walking distance to bayside beaches, shops, boat ramp, walking tracks, sporting facilities and Clifton Springs Primary School, this property presents the ultimate in seaside family living.

The Facts:

- Spacious Metricon family home, offering spectacular bay views
- Zoned floorplan caters to family living and entertaining

[For full version visit the website](https://www.bellarineproperty.com.au)

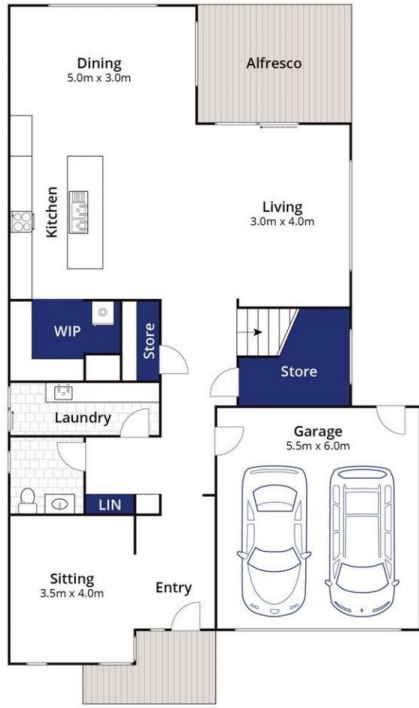
Type : House
Price : \$ 1,085,000
Land Size : 512 sqm
View : <https://www.bellarineproperty.com.au/67870>
 69



Christian Bartley
 03 5254 3100



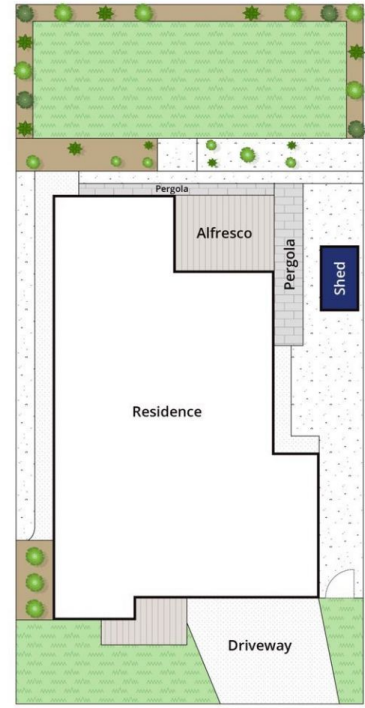
Lee Martin
 03 5297 3888



Ground Floor



First Floor



Site Plan

Whilst bwr.com.au has made every attempt to ensure the accuracy of the floor plan contained here, measurements are approximate and no responsibility is taken for any error, omission, or mis-statement. This plan is for illustrative purposes only.

139 Oceania Drive, Curlewis