



20/110 Tomara Drive Connewarre VIC

3 2 2

The Feel:

Open plan living flows to East and West balconies-facing balconies, providing luxury living and entertaining with picturesque views over the Creek and Beach Courses. This extended sense of space, combined with high ceilings and abundant natural light, creates a cohesive space that seemingly reaches out to the green. Low-to-no-maintenance, this lock and leave 2-storey villa in the exclusive Thirteenth Beach Golf Estate is ideal for permanent living, holidays or short-term rentals.

The Facts:

- Wide banks of double-glazing flood the floor plan with natural light & links views
- Open plan living upstairs surrounded by beautiful views of the golf course & surrounds
- Rugged dunescape views & the iconic Barwon Heads Club House are focal points
- Living space with the ambience of a 'Real Flame' gas log fire
- East and West balconies-facing balconies provide sunrise/sunset vantage points & cross-flow ventilation
- Dining area boasts impactful views, opening onto easterly

Price : \$ 930,000

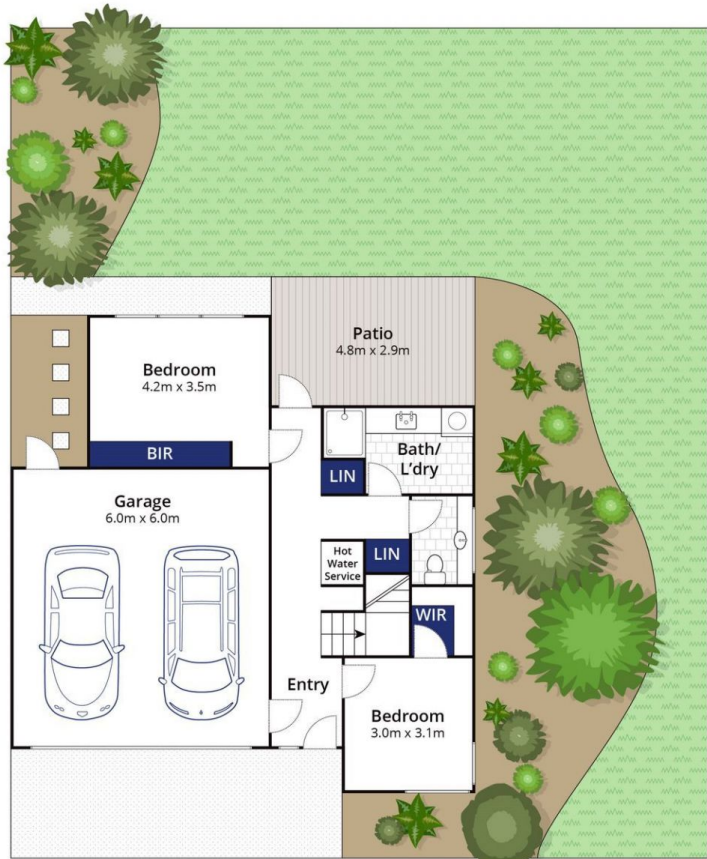
View : <https://www.bellarineproperty.com.au/6786946>



Peta Walter
03 5254 3100



Levi Turner
03 5254 3100



Ground Floor



First Floor

Whilst bwr.com.au has made every attempt to ensure the accuracy of the floor plan contained here, measurements are approximate and no responsibility is taken for any error, omission, or mis-statement. This plan is for illustrative purposes only.

20/110 Tomara Drive, Connewarre