



22-30 Caldwell Crescent Wallington VIC

4 🛏 2 🚿 2 🚗

The Feel:

Idyllic in every way, this established 3 acre property bordered by ambient whispering gums, offers you a traditional large four bedroom family home. The spacious floor plan provides ample room for a large family and overnight guests, along with multiple options for entertaining whilst delivering practicality and function. The home revels in its setting, offers effortless serenity, and comes to life when everyone's in the pool and enjoying the wonderful coast meets country lifestyle!

The Facts:

- Privately set in a quiet court enhancing seclusion and peacefulness across an extensive north boundary
- Over 3 Acres of scenic and flat landscaped land
- Charming 4BR home, with 3 living zones and direct outdoor flow
- The masters suite is privatised to the front of the home, complete with ensuite bathroom & walk in robe
- 3 more spacious bedrooms with WIRs, each with garden views
- Open plan living with dual sunken lounges and a third living/ formal dining room

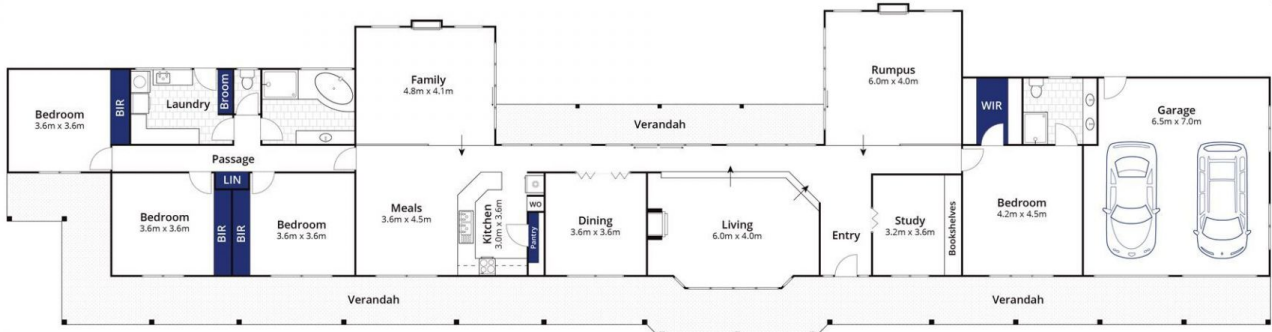
Price : \$ 1,900,000
Land Size : 3.4 Acres
View : <https://www.bellarineproperty.com.au/67318>
 58



Toby Lee
 03 5254 3100



Andrew Kibbis
 03 5254 3100



Ground Floor



Site Plan

Whilst bwrn.com.au has made every attempt to ensure the accuracy of the floor plan contained here, measurements are approximate and no responsibility is taken for any error, omission, or mis-statement. This plan is for illustrative purposes only.

30 Caldwell Crescent, Wallington