



7 Wattlebird Crescent Barwon Heads VIC

3 1 2

The Feel:

Meaning 'by the sea' in the region's Indigenous language, 'Yaringa' is located in a highly sought-after quiet neighbourhood, only 380m from the boardwalks of the Barwon River. A golden opportunity to get into the Barwon Heads market or secure a worthy investment property, this renowned family-friendly area is celebrated for its close proximity to the water, Village Parklands, town and primary school. East-orientated living captures the sunny outlook, with rich timber floors. Offering 3 bedrooms and 1 bathroom, this home sits on a generous 781sqm (approx.) site, with a single carport and space for 2 extra cars/ boat or caravan in the backyard. Lifestyle space, privacy & possibilities is what this home offers!

Price : \$ 1,521,000
Land Size : 781 sqm
View : <https://www.bellarineproperty.com.au/6730087>



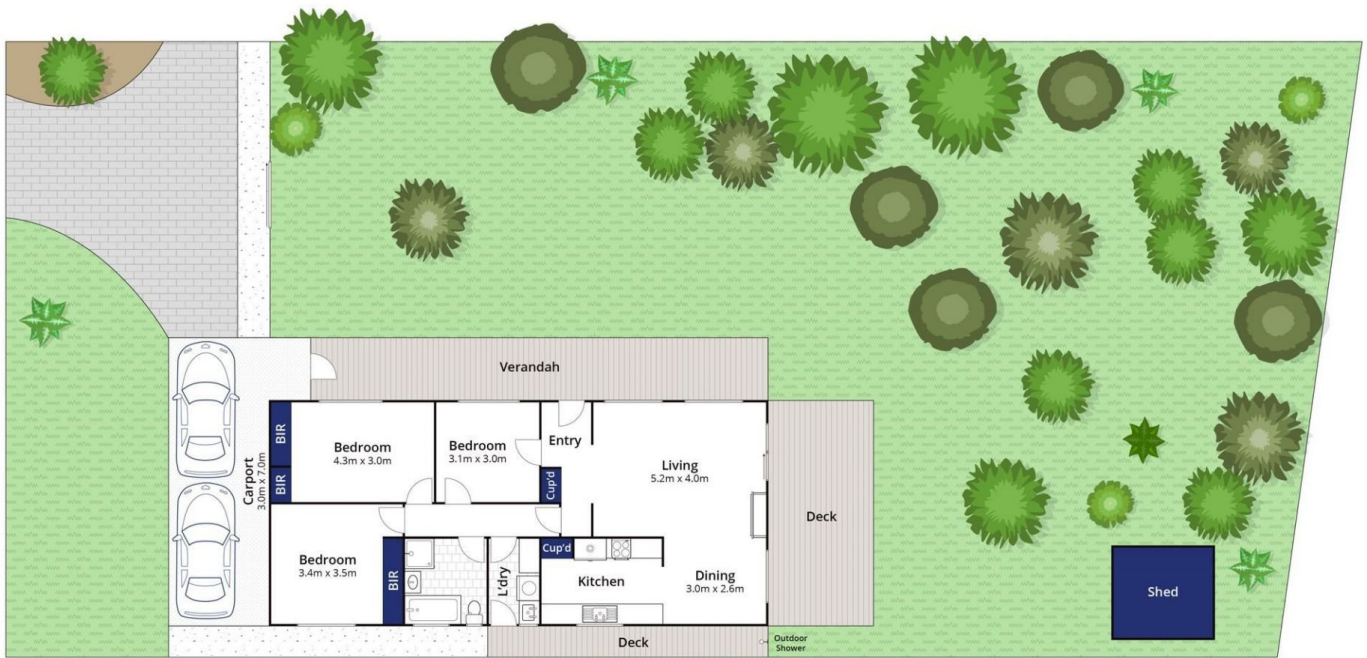
Levi Turner
03 5254 3100



Peta Walter
03 5254 3100

The Facts:

- Offering an unbeatable lifestyle to match an unbeatable location
- Single-storey home on large block with incredible scope for extending the home (STCA)
- Substantial outdoor living space on timber deck, direct from the main living hub
- Open plan living room with east-oriented windows that



Whilst bwrn.com.au has made every attempt to ensure the accuracy of the floor plan contained here, measurements are approximate and no responsibility is taken for any error, omission, or mis-statement. This plan is for illustrative purposes only.

7 Wattle Bird Crescent, Barwon Heads

bellarine property
Rentals | Commercial | Sales | Projects