



## 20 Coriyule Road Curlewis VIC

4 2 2

Click on the 'Book Inspection' button below to register to attend one of our allocated inspections times for this property

### The Feel:

Contemporary 4BR family home offering zoned living fit for the family to relax and enjoy. Complemented by timber look floors and a calm, neutral interior; with priceless flow to the undercover alfresco area. Beautifully grassy surrounds complete this covetable Curlewis home. Inspect today.

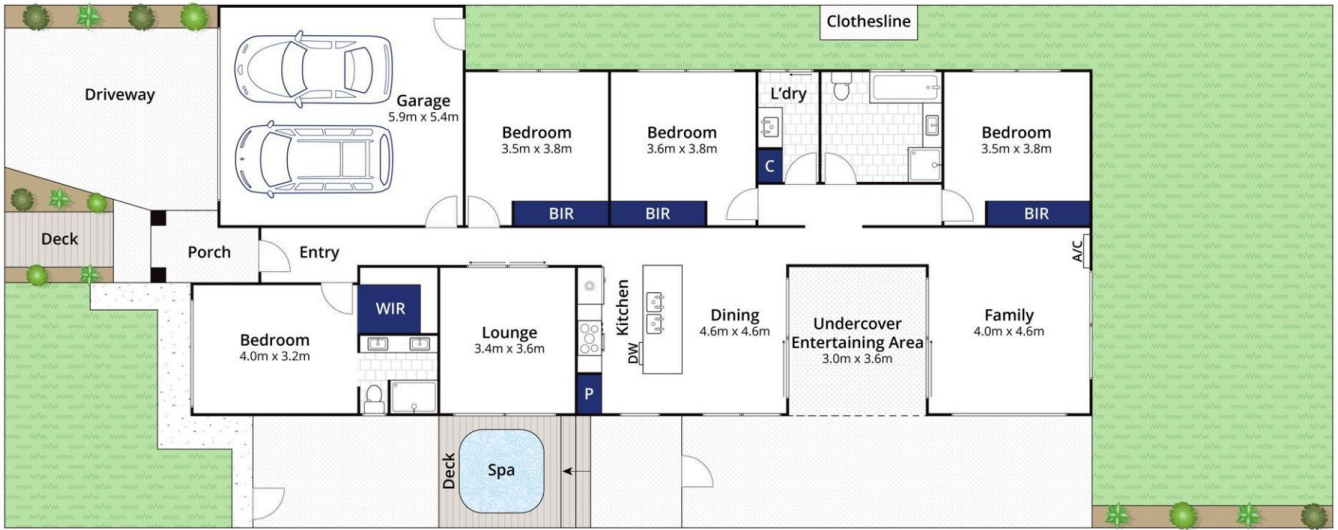
### The Facts:

- Stylish open plan galley kitchen and dining zone
- Kitchen boasts 900mm SS oven and gas cooktop
- Under mounted sink, stone benchtops and island
- Direct flow to the weather protected alfresco area
- Private NF family room with backyard connection
- Master suite with WIR and stylish ensuite bathroom
- 3 additional large BRs offer BIRs, privacy and space
- Ducted heating and air conditioners to acclimate the home
- DLUG with dual access and further off street parking
- Short distance to playgrounds, boat ramp and shopping

**Price** : \$ 700,000  
**Land Size** : 448 sqm  
**View** : <https://www.bellarineproperty.com.au/6647405>



**Lee Martin**  
**03 5297 3888**



Whilst [bwrn.com.au](http://bwrn.com.au) has made every attempt to ensure the accuracy of the floor plan contained here, measurements are approximate and no responsibility is taken for any error, omission, or mis-statement. This plan is for illustrative purposes only.

## 20 Coriyule Road, Curlewis

**bellarine** property  
Rentals | Commercial | Sales | Projects