

10 Wattleside Drive Ocean Grove Vic

4 2 2

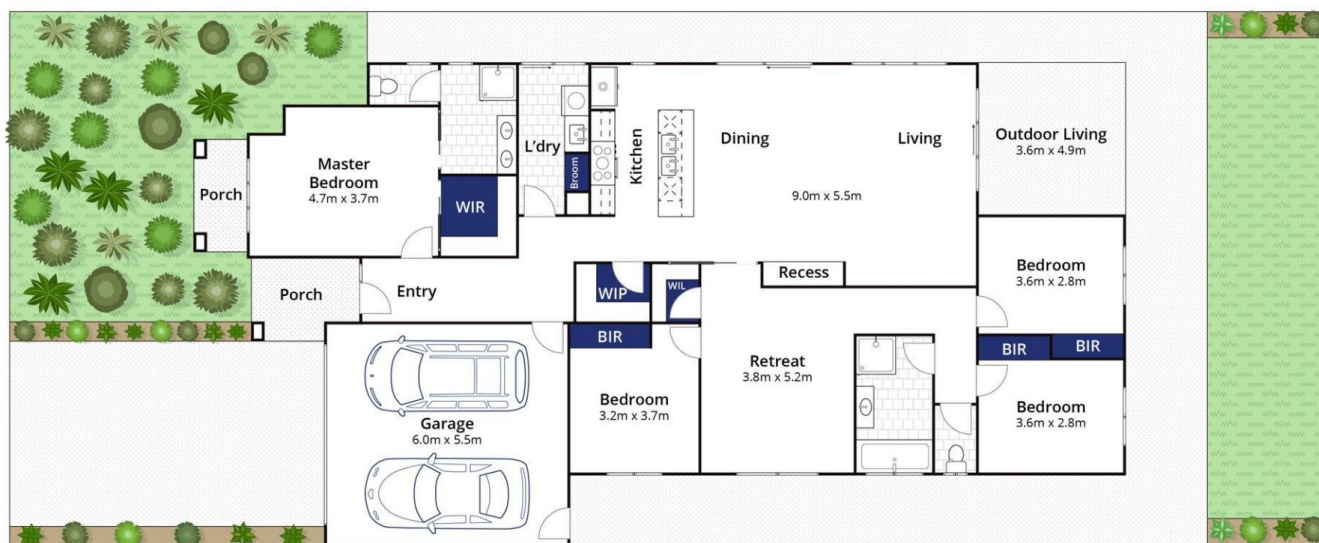
This 4 bedroom new build has been finished to perfection. Features include 4 bedrooms, the master with a walk in robe, ensuite and porch, double garage with internal access, all minor bedrooms have built in robes, open plan, light filled, kitchen living and dining space, separate living zone, enclosed backyard with outdoor living space which overlooks vacant land. Ducted heating and cooling plus ceiling fans will ensure year round comfort. In a new development of Ocean Grove be the first to live in this home close to schools, shops and public transport. Inspections are subject to change or cancellation with minimal notice.

View : <https://www.bellarineproperty.com.au/6635968>



Christian Bartley
03 5254 3100

*All information offered by Bellarine Property is provided in good faith. It is derived from sources believed to be accurate and current as at the date of publication and as such Bellarine Property simply pass this information on. Use of such material is at your sole risk. Prospective tenants are advised to make their own enquiries with respect to the information that is passed on. Bellarine Property will not be liable for any loss resulting from any action or decision by you in reliance on the information.



Whilst bwrm.com.au has made every attempt to ensure the accuracy of the floor plan contained here, measurements are approximate and no responsibility is taken for any error, omission, or mis-statement. This plan is for illustrative purposes only.

10 Wattleside Drive, Ocean Grove

bellarine b property
Rentals | Commercial | Sales | Projects