



## 15 Palmerston Street Drysdale VIC

5 2 2

### The Feel:

Situated in the heart of Drysdale and only an easy 10 - 15 minutes drive to the wonderful beaches of Ocean Grove, Point Lonsdale & Portarlington, this immaculately presented home offers a beautifully lit open space and highly functional floor plan. The property comprises of 5 BRs with 3 living zones which augments a sense of space and privacy with the undeniable attraction being the spacious backyard. The yard has so much space that there is plenty of room for the kids to kick the football around, shoot some hoops or even play a family game of cricket and then in the evening relax around a fire pit toasting marshmallows. This rare commodity is only a short stroll to cafes supermarkets retail shops schools recreation reserve day-care and kindergartens.

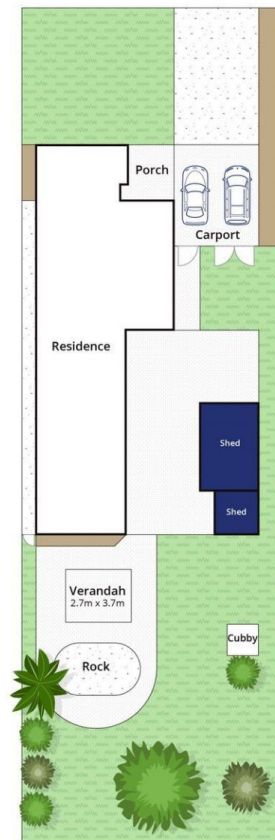
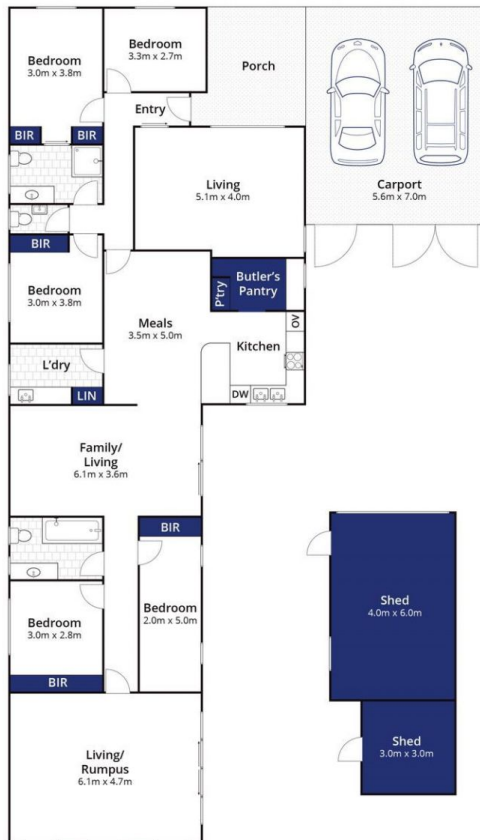
**Price** : \$ 990,000  
**Land Size** : 1215 sqm  
**View** : <https://www.bellarineproperty.com.au/65393>  
 59



**Lee Martin**  
 03 5297 3888

### The Facts:

- OP living, meals and kitchen occupy the central nucleus
- Traditional hostess kitchen with butlers pantry and ss apps
- Highly desired northern orientation amplifies natural light
- Rumpus room and second lounge accommodates all
- 5BRs split into two zones promoting flexibility and privacy
- Timber floors and a neutral palette throughout the interior



Whilst [bwrn.com.au](http://bwrn.com.au) has made every attempt to ensure the accuracy of the floor plan contained here, measurements are approximate and no responsibility is taken for any error, omission, or mis-statement. This plan is for illustrative purposes only.

## 15 Palmerston Street, Drysdale

**bellarine b property**  
Rentals | Commercial | Sales | Projects



Whilst [bwrn.com.au](http://bwrn.com.au) has made every attempt to ensure the accuracy of the floor plan contained here, measurements are approximate and no responsibility is taken for any error, omission, or mis-statement. This plan is for illustrative purposes only.

# 15 Palmerston Street, Drysdale