



1/16 Drysdale Street Portarlington VIC

3 2 2

The Feel:

A fantastic opportunity exists to secure your position within pristine Portarlington in this striking three bedroom, two bathroom unit. Located a seas breeze from the Ferry Terminal across to Melbourne, walking tracks linking you to nearby bayside beaches and the town centre, there is no better place to set yourself up whether it be for holidays or as a permanent downsize.

The Facts:

- OP kitchen, meals and family zone with highlight windows
- Heightened ceilings and ample glazing invite light inside
- Spacious kitchen with WIP, SS apps and plenty of storage
- Fabulous, direct connection to the outdoor alfresco zone
- Master BR offers large BIR and brightly lit ensuite bathroom
- 2 additional BRs, main bathroom and separate W.C
- DLUG, sealed driveway, laundry and secure front entrance
- Ducted heating and ceiling fans keep the home comfortable
- Plus S/S air conditioning in the living area
- A short distance to the Ferry Terminal, town centre and school

Land Size : 315 sqm

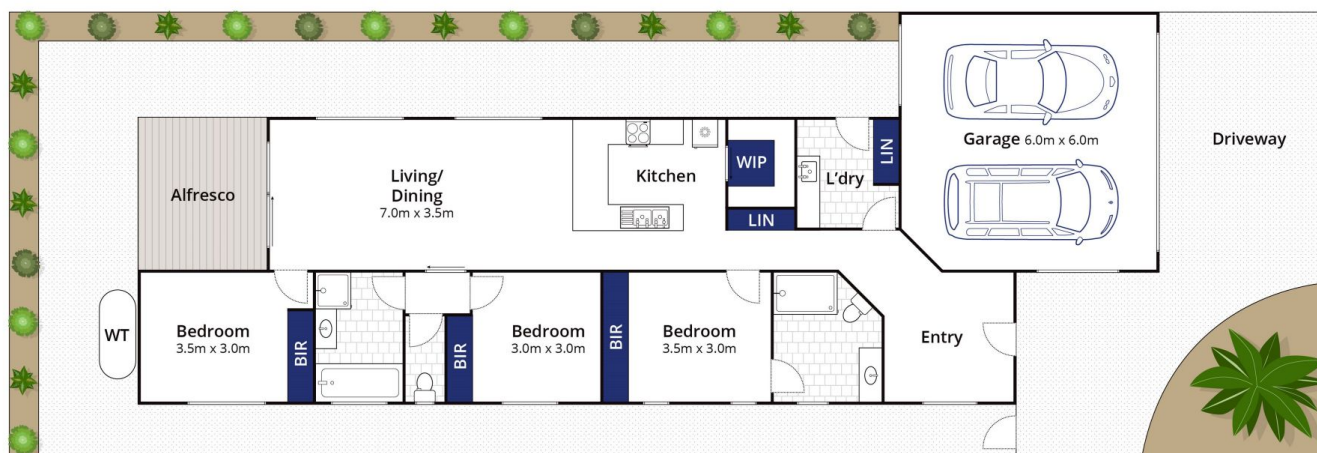
View : <https://www.bellarineproperty.com.au/6536665>



Christian Bartley
03 5254 3100



Levi Turner
03 5254 3100



Whilst bwrn.com.au has made every attempt to ensure the accuracy of the floor plan contained here, measurements are approximate and no responsibility is taken for any error, omission, or mis-statement. This plan is for illustrative purposes only.

1/16 Drysdale Street, Portarlington

bellarine b property
Rentals | Commercial | Sales | Projects