



**26-28 Lady Earl Crescent Ocean Grove VIC**

**4** **2** **2**

CONTACT US TO ATTEND OUR SCHEDULED INSPECTION.

Density limits apply.

**The Feel:**

Crisp, cool and contemporary tones envelope this brand new home, located in what is becoming one of Ocean Grove's most popular estates to date. Timber floors contrast against a muted interior palette, harnessing a relaxed coastal feel with direct sunny north orientation locking in natural light and sunshine all year. Fully complete and move in ready - inspect today!

**The Facts:**

- OP kitchen, meals and living enjoying preferred north orientation
- Gorgeous kitchen with 900mm freestanding oven/cooktop and WIP
- Stone benchtops complement contrasting timber and white joinery
- Direct flow to the outdoor alfresco area and spacious backyard
- Second lounge offering space and flexibility for growing

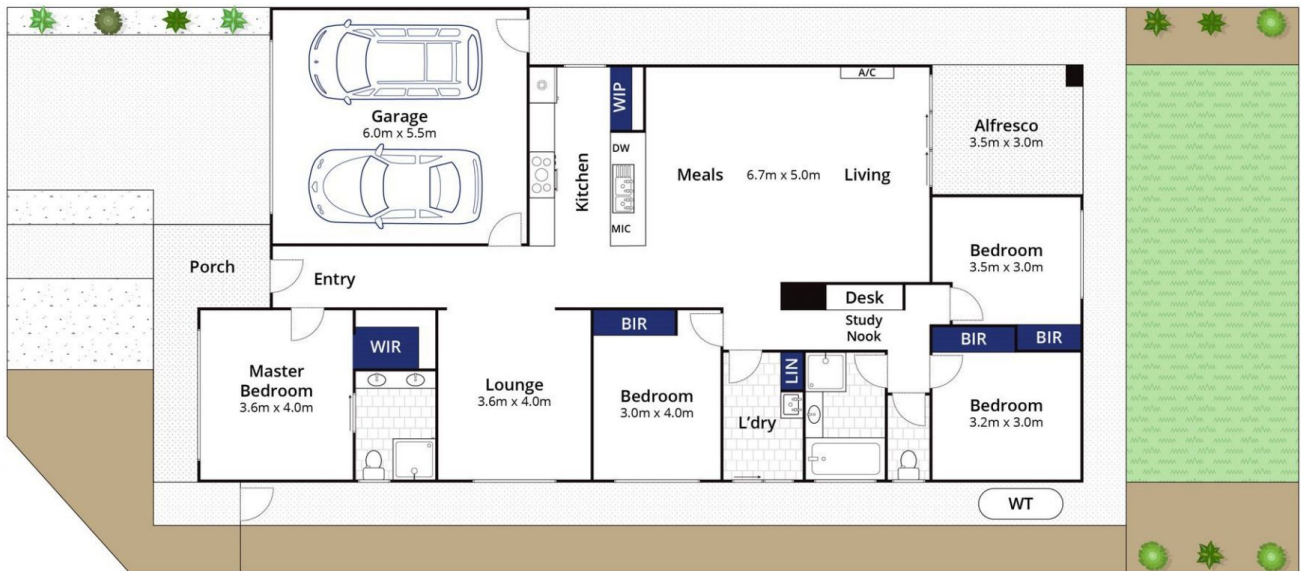
**Price** : \$ 805,000  
**Land Size** : 423 sqm  
**View** : <https://www.bellarineproperty.com.au/6532755>



**Christian Bartley**  
**03 5254 3100**



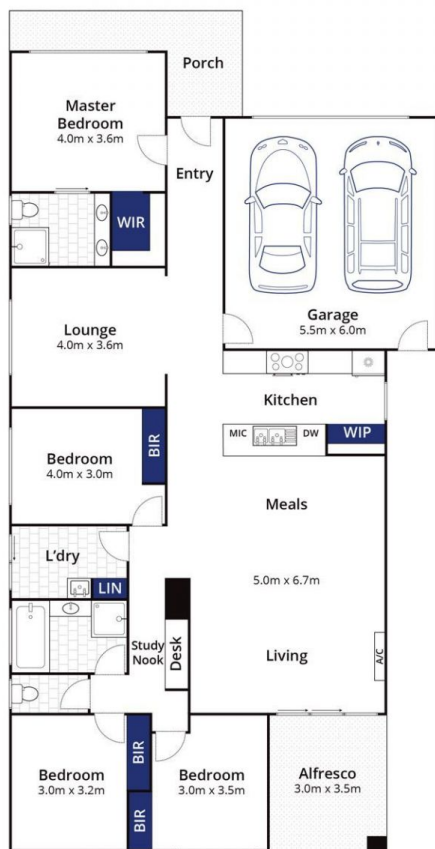
**Toby Lee**  
**03 5254 3100**



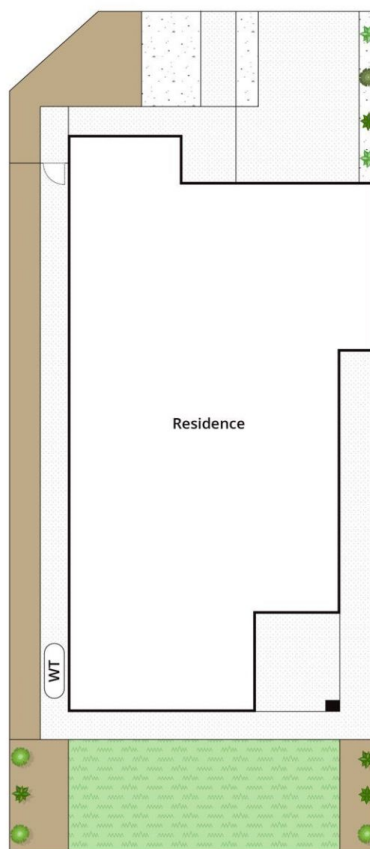
Whilst [bwrm.com.au](http://bwrm.com.au) has made every attempt to ensure the accuracy of the floor plan contained here, measurements are approximate and no responsibility is taken for any error, omission, or mis-statement. This plan is for illustrative purposes only.

## 26-28 Lady Earl Crescent, Ocean Grove

**bellarine** **b**property  
Rentals | Commercial | Sales | Projects



Ground Floor



Site Plan

Whilst [bwrn.com.au](http://bwrn.com.au) has made every attempt to ensure the accuracy of the floor plan contained here, measurements are approximate and no responsibility is taken for any error, omission, or mis-statement. This plan is for illustrative purposes only.

## 26-28 Lady Earl Crescent, Ocean Grove

**bellarine b property**  
Rentals | Commercial | Sales | Projects