



33 Anstead Avenue Curlewis VIC

4 2 2

The Feel:

Families will be drawn to the abundance of space and multiple relaxation zones of this striking four bedroom home, sensationally located nearby to bayside beaches, the Clifton Springs Jetty and boat ramp. Three outdoor entertaining areas surround the property, ensuring you can follow the seasons and enjoy the great outdoors all year round, dually tripling your interior living space. A number of upscaled specifications will impress the fastidious buyer searching for a fully established, family focused bayside beauty.

The Facts:

- Welcoming undercover timber entry deck and portico
- OP galley kitchen, meals and living zone to the rear
- Kitchen offers stone benchtops, 900mm SS apps and WIP
- Double undermounted sinks and quality Miele dishwasher
- Additional lounge room with feature timber lined wall
- Widened hallways and heightened ceilings amplify space
- Study/office nook with warming timber built in joinery
- Highlight windows throughout the home invite natural light
- Ample master suite with step-in robe and ensuite bathroom

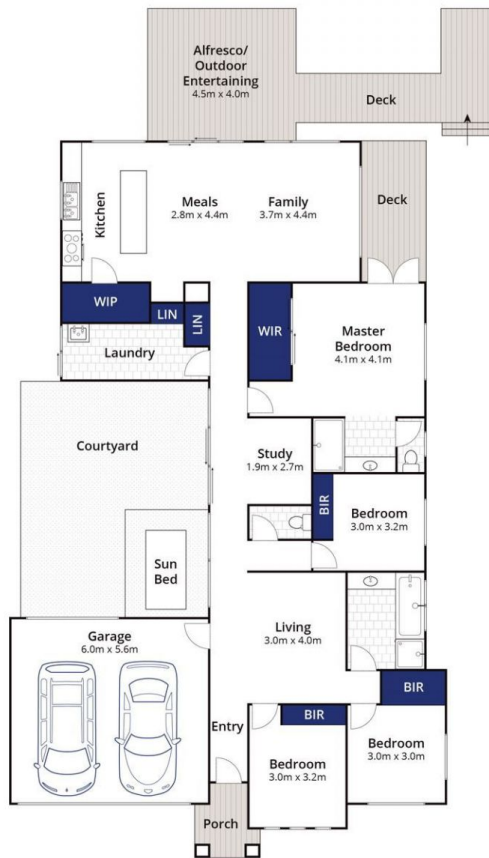
Price : \$ 720,000

Land Size : 512 sqm

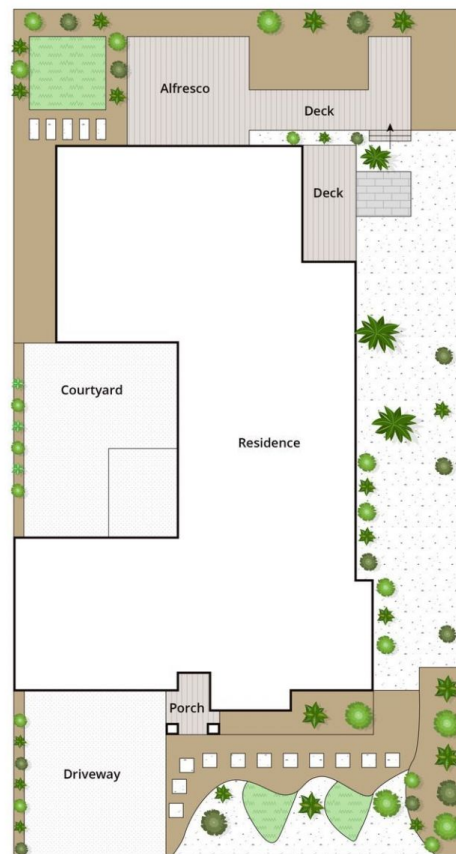
View : <https://www.bellarineproperty.com.au/63564>
18



Lee Martin
03 5297 3888



Ground Floor



Site Plan

Whilst bwrn.com.au has made every attempt to ensure the accuracy of the floor plan contained here, measurements are approximate and no responsibility is taken for any error, omission, or mis-statement. This plan is for illustrative purposes only.

33 Anstead Avenue, Curlewis

bellarine b property
Rentals | Commercial | Sales | Projects