



42 Daintree Way Ocean Grove VIC

4 2 2

The Feel:

Offering an impressively spacious 845 sqm (approx) block with room for a pool or shed, along with a generous 4-5 bed, 4 living floorplan, this home is an incredibly rare find! Set in a quiet and established location within walking distance to parks, schools, sporting facilities and shops, this immaculately presented home has been designed to take family life in it's stride. Don't miss this one!

The Facts:

- Huge land size offers ample space for pool or shedding with drive-through garage
- 4 airy living zones plus outdoor entertaining zone
- 4 bedrooms + study provide space for everyone
- Downstairs expansive OP living, kitchen and meals area
- Access to outdoor deck and fire pit area with built in seating
- Separate theatre room, incl speakers and wired for sound
- Entertainers kitchen hosts 900mm f/s oven with gas cooktop
- Feature stone waterfall benchtops and well fitted WIP
- Fridge cavity plumbed for automatic water/ice capable fridge

Price : \$ 1,005,000

Land Size : 845 sqm

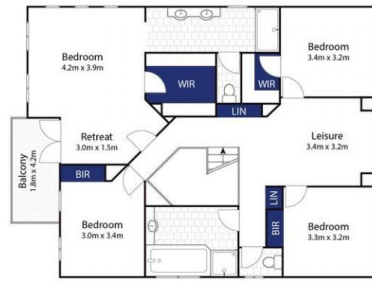
View : <https://www.bellarineproperty.com.au/6332958>



Christian Bartley
03 5254 3100



Dan Halsey
03 5254 3100



The floor plan shows a house with a Driveway and Garage (6.0m x 5.6m) on the left. The main entrance is through a Portico and Entry into the Living (6.0m x 3.9m) area. A Study (3.0m x 3.3m) is adjacent to the Entry. The Kitchen (2.6m x 3.3m) is located next to the Study and includes a Store. A L'dry (Linen Dry) is also shown. The Family (4.8m x 4.0m) room is connected to the Living area. The Theatre Room (5.3m x 4.7m) is a large room on the right. The Meals (3.0m x 5.0m) area is adjacent to the Theatre Room and includes a Bar. A Deck is located outside the Meals area. The plan also shows a front garden with various plants and a driveway.

Whilst **bwrn.com.au** has made every attempt to ensure the accuracy of the floor plan contained here, measurements are approximate and no responsibility is taken for any error, omission, or mis-statement. This plan is for illustrative purposes only.

bellarine **b** property
Rentals | Commercial | Sales | Projects