



## 69-73 High Ridge Drive Clifton Springs VIC

4 3 8

### The Feel:

A rare opportunity exists to purchase one of the Bellarine's most exclusive lifestyle properties, with breathtaking views over the water and rural surrounds. Set on over 3.6 acres (approx), this superbly updated 4-bedroom home has multiple living areas, a showpiece Provincial style kitchen, 6.6kW solar, sunny entertaining areas and fenced paddocks with horse facilities. 180° vantage points over Corio Bay and the You Yangs can be enjoyed from all parts of this amazing property, also boasting bay views from the separate 2 bed/2 living self-contained cottage.

### The Facts:

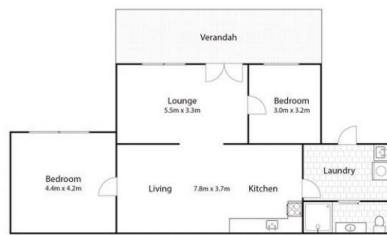
- Beautifully presented home, set on 3.6 acres (approx.) & minutes from Clifton Springs village
- Commanding hilltop position w' amazing bay views to the west & rural Drysdale to the east
- Panoramic vantage points encompass glorious You Yangs vista
- Family-friendly floorplan provides well-zoned options for the demands of a growing family
- Separate 2 bed/2 living S/C cottage for possible B&B potential, or accommodating extra family

**Land Size** : 3.6 Acres

**View** : <https://www.bellarineproperty.com.au/6302892>



**Lee Martin**  
**03 5297 3888**



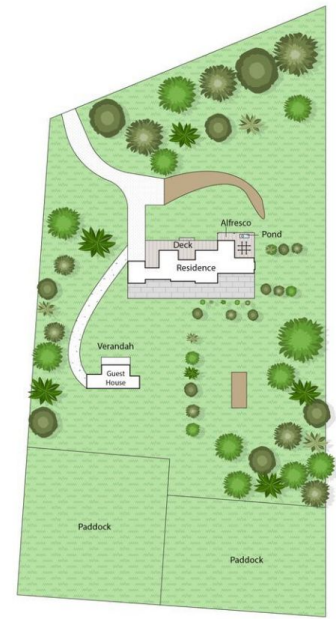
Guest House



First Floor



Ground Floor



Site Plan

Whilst [bwrn.com.au](http://bwrn.com.au) has made every attempt to ensure the accuracy of the floor plan contained here, measurements are approximate and no responsibility is taken for any error, omission, or mis-statement. This plan is for illustrative purposes only.

## 69-73 High Ridge Drive, Clifton Springs

**bellarine** property  
Rentals | Commercial | Sales | Projects