






**2/55 Hitchcock Avenue Barwon Heads VIC**

**2  1  1 **

#### The Feel:

Inner-village living with a bird's-eye view of the action has never looked better! Located in the heart of Barwon Heads on cosmopolitan Hitchcock Avenue, you could not ask for a more convenient location. Open plan living links to interconnected outdoor living, creating a cohesive space with excellent flow and tremendous storage. There is a palpable sense of space, with swathes of natural light pouring in from the soaring pavilion windows. Comprising two bedrooms, one bathroom and substantial living, what a perfect opportunity to downsize or purchase as an investment property.

#### The Facts:

Design by Rendine Constructions; renowned for innovation, aesthetics & functionality  
 Quality Spotted Gum timber floor boards, high ceilings & ample light  
 Show-stopping kitchen with Caesarstone bench tops and soft close drawers  
 Clerestory windows above the kitchen and mirrored splashbacks that reflect the outdoors  
 Appliances include Smeg dishwasher, electric oven and

**Price** : \$ 800,000

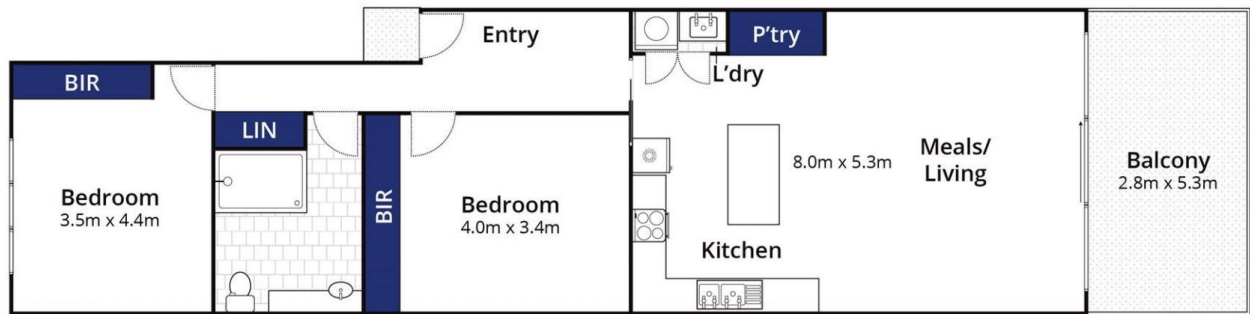
**View** : <https://www.bellarineproperty.com.au/6007574>



**Levi Turner**  
03 5254 3100



**Peta Walter**  
03 5254 3100



Whilst [bwrm.com.au](http://bwrm.com.au) has made every attempt to ensure the accuracy of the floor plan contained here, measurements are approximate and no responsibility is taken for any error, omission, or mis-statement. This plan is for illustrative purposes only.

**2/55 Hitchcock Avenue, Barwon Heads**

**bellarine b property**  
Rentals | Commercial | Sales | Projects