



26 Sundial Drive Clifton Springs VIC

4 2 2

The Feel:

Boasting bay views & close proximity to Drysdale village, this custom-built family home (HIA Awards finalist) is located in a prestigious locale. This substantial property comprises 4 sizable bedrooms, including a grand master with private balcony & Bay views, his 'n' hers WIRs & a spa en-suite with twin vanities & double shower. Four living areas include a home theatre room, entertainer's kitchen & the convenience of a home office at the entry. Space & style is yours on Sundial Drive.

The Facts:

- Custom 2-storey urban lifestyle property w/ zoned floorplan for entertaining & family life
- Elevated Master captures panoramic views of Corio Bay, the You Yangs & surrounding countryside
- Spacious, light-filled living areas & outstanding design features
- Seamless connection to private entertaining area with merbau decking
- High ceilings, wide tiled entry & Southern Box floating floors extend the sense of spaciousness
- Superb fixtures, custom window furnishings & quality

Price : \$ 782,500

Land Size : 500 sqm

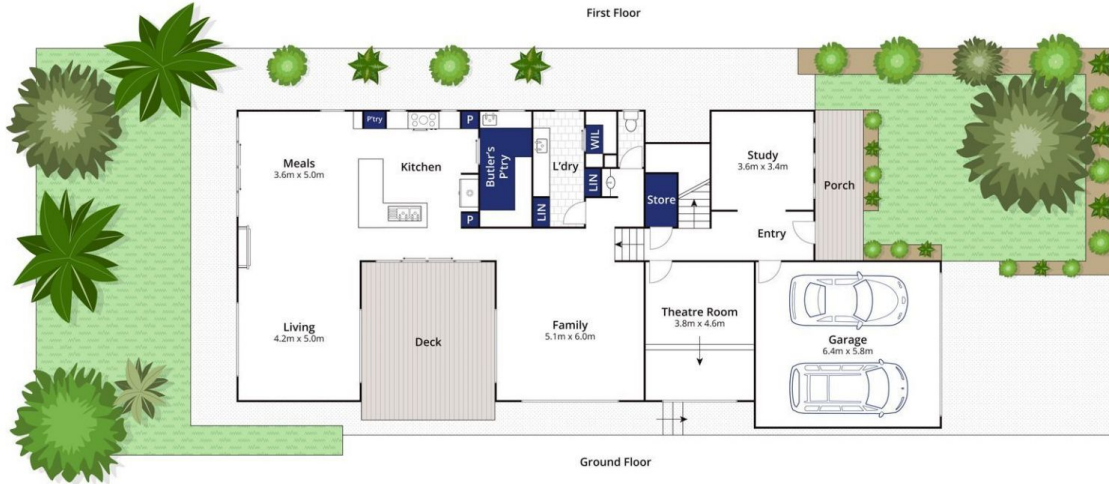
View : <https://www.bellarineproperty.com.au/56355>
60



Lee Martin
03 5297 3888



First Floor



Ground Floor

Whilst bwrn.com.au has made every attempt to ensure the accuracy of the floor plan contained here, measurements are approximate and no responsibility is taken for any error, omission, or mis-statement. This plan is for illustrative purposes only.

26 Sundial Drive, Clifton Springs

bellarine  property