



66 Kelpie Boulevard Curlewis VIC

4 2 2

The Feel

This 4-bedroom home in the desired location of Coriyule Estate, Curlewis, is customised to include quality electricals throughout, with a clearly zoned floorplan providing dual living zones to suit a family's needs. North west orientation captures the afternoon sunshine, while protected outdoor living flows directly onto a substantial backyard for kids & pets. Take your pick of two parks within an easy stroll, & enjoy the convenience of being located just a few km's from the local Primary School & shopping centre.

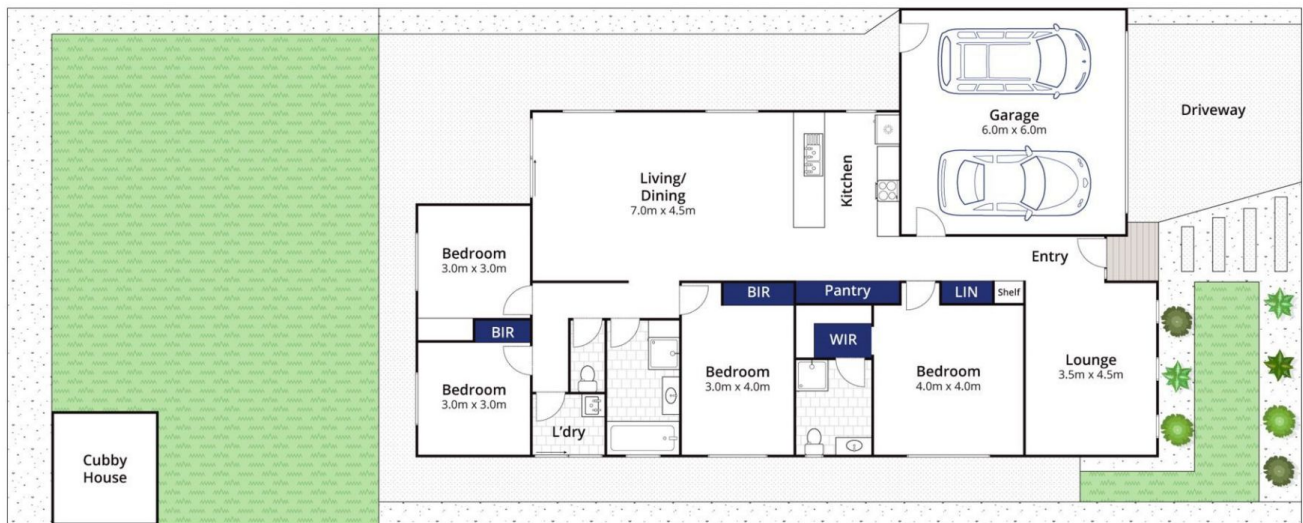
The Facts

- Quality custom-built brick veneer residence by local 'Boutique Homes'
- Recently built with 2.55m ceilings & well-proportioned open plan living
- Inviting entry with 'Natural Oak' timber laminate floors throughout & carpet to bedrooms
- Modern, classic kitchen with caesarstone benches & floor to ceiling pantry
- Stainless steel Westinghouse appliances; 900mm oven, gas hob
- Sunny living & meals area flows to outdoor area via sliding

Price : \$ 530,000
Land Size : 491 sqm
View : <https://www.bellarineproperty.com.au/53923>
 16



Lee Martin
 03 5297 3888



Whilst bwrn.com.au has made every attempt to ensure the accuracy of the floor plan contained here, measurements are approximate and no responsibility is taken for any error, omission, or mis-statement. This plan is for illustrative purposes only.

66 Kelpie Boulevard, Curlewis

bellarine **b**property