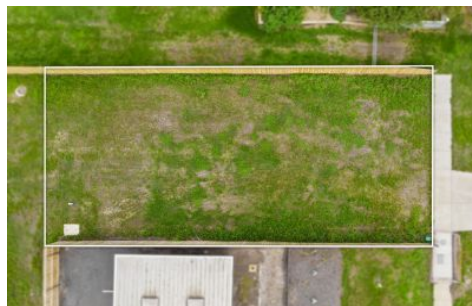




Build here and get \$25,000*

The Federal Government's 'HomeBuilder' eligibility criteria applies.

Please call Lee Martin on 0400 957 839 for more information.



40 Newcombe Street Drysdale VIC

An outstanding opportunity presents to build in the central Drysdale area with convenient proximity to the town centre, schools, cafés and medical facilities. Bring your dream home to life on one of the last remaining titled vacant allotments in the area. With easy access to Geelong, now's the time to take advantage of the lifestyle benefitted by living on the Bellarine. Snap up this 410m2 (approx.) site to secure your lifestyle property.

The Facts

- Bonus \$25,000 for HomeBuilder scheme or \$45,000 for first home buyers!* Conditions Apply
- 410m2 (approx.) of sought-after vacant land to build your dream home or investment property (STCA)
- 13.49 metres frontage
- Stunning Hotondo-designed house and land package ready to go!
- House and Land packages available
- Prime location offering a relaxed lifestyle minutes to Drysdale schools, cafes & shops
- One of the last remaining vacant allotments in this desirable and established location
- A special project or investment - Investors and downsizers

Price : \$ 235,000
Land Size : 410 sqm
View : <https://www.bellarineproperty.com.au/53072>
 35



Lee Martin
03 5297 3888