

**12 Plantation Drive Connewarre VIC**

4 🏠 3 🚗 2 🚗

**The Feel:**

Boasting direct views across the coveted 6th Hole of the 13th Beach Creek Course, surrounded by lush, manicured greens while enjoying unrivalled evening sunsets, this 4-5 BR family home offers a lifestyle incomparable to many within this estate. Walking tracks through to 13th beach will appease beachgoers, while the short distance to the Barwon Heads village ensures practicalities are met. Live the dream - enquire today.

**The Facts:**

- Dramatic entry with visual connection to the Creek Course
- Spacious downstairs OP living, kitchen and dining zone
- Kitchen enjoys high-end, quality Miele appliances
- Built in microwave, steam oven and coffee machine
- Warming drawers, appliance cupboard and DW
- Two elevations open completely to the outdoor alfresco
- Direct flow onto the signature 6th Hole of the Creek Course
- Priceless outlooks across the 5th fairway and surrounds
- Ample space to entertain family and friends indoors and out
- Fijian Mahogany decking with built in timber seating

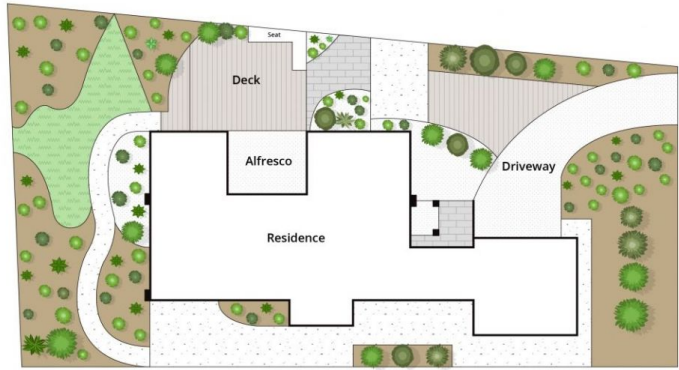
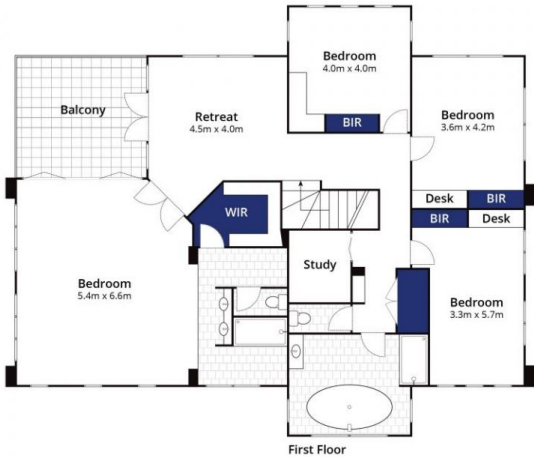
**Price** : \$ 1,615,000  
**Land Size** : 883 sqm  
**View** : <https://www.bellarineproperty.com.au/52668>  
 42



**Peta Walter**  
 03 5254 3100



**Levi Turner**  
 03 5254 3100



Whilst [bwrn.com.au](http://bwrn.com.au) has made every attempt to ensure the accuracy of the floor plan contained here, measurements are approximate and no responsibility is taken for any error, omission, or mis-statement. This plan is for illustrative purposes only.

## 12 Plantation Drive, Barwon Heads

bellarine  property