



## 58-60 Tower Road Portarlington VIC

3 2 3

Current Bid - \$830,000 - 3 Qualified Bidders

The property has not met reserve. The Openn Negotiation (auction held online with flexible terms for qualified buyers) is underway and the property can sell as early as tomorrow. Contact Ange on 0423 295 705 or Lee on 0400 957 839 immediately to become qualified and avoid missing out.

### The Feel:

Centrally placed to take advantage of the stunning wineries and award winning produce unique to the Bellarine, along with breathtaking views across Port Phillip Bay to Melbourne; this immaculate 3BR property is a lifestyle choice hard to pass up. Multiple living spaces, warming northern aspects and semi-sustainably tick all the boxes; a most impressive Bayside property!

### The Facts:

- Breathtaking bay views filter through the bright interior
- OP kitchen, meals and living with NF patio access
- Beautiful kitchen with quality cabinetry and Bosch apps.
- Spacious secondary sunken lounge with views

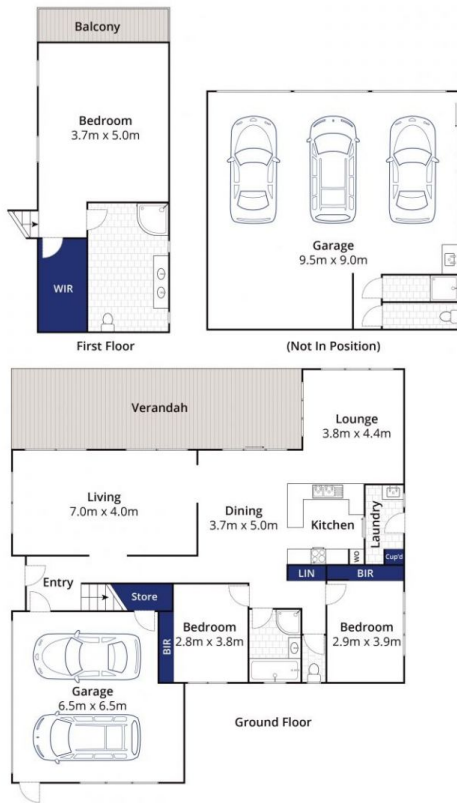
**Price** : \$ 915,000  
**Land Size** : 1249 sqm  
**View** : <https://www.bellarineproperty.com.au/5219566>



**Christian Bartley**  
03 5254 3100



**Lee Martin**  
03 5297 3888



Whilst [bwrn.com.au](http://bwrn.com.au) has made every attempt to ensure the accuracy of the floor plan contained here, measurements are approximate and no responsibility is taken for any error, omission, or mis-statement. This plan is for illustrative purposes only.

**58-60 Tower Road, Portarlington**

bellarine **b** property