



**217 Melaluka Road Leopold VIC**

5 🏠 2 🚗 5 🚗

**The Feel:**

Set on a private one acre allotment bordered by established Gum Trees, this stunning 5BR home has the wow factor! Designed to take advantage of its desirable north orientation, the beautifully executed design wraps around the sunny gardens, outdoor entertaining areas and swimming pool, showcasing an unbelievably high standard in family living. A must to inspect.

**Land Size** : 4005 sqm

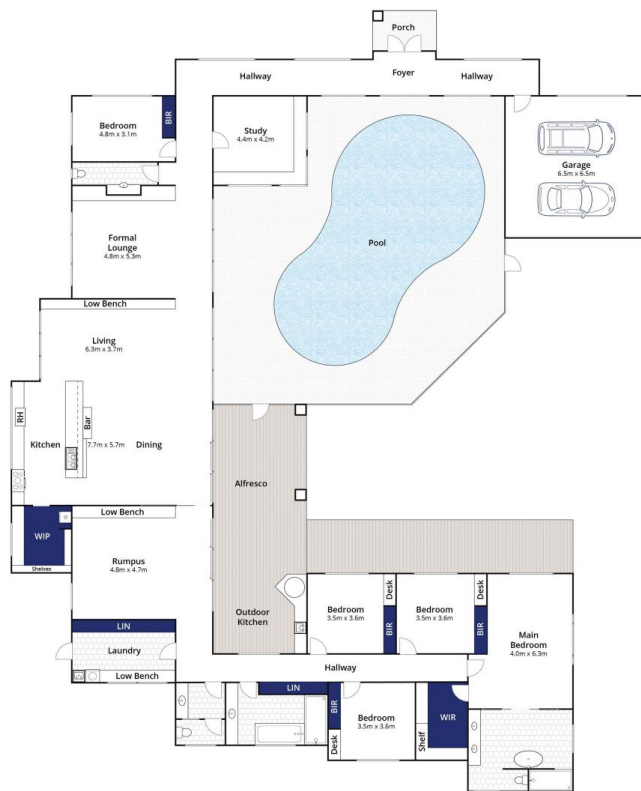
**View** : <https://www.bellarineproperty.com.au/5202268>

**The Facts:**

- Soaring ceilings amplify the OP living, kitchen and meals
- High end apps, butlers pantry and stone benchtops within
- Complete north aspect, welcoming natural sunlight
- Dbl door access to the outdoors with built in entertaining
- Outdoor kitchen with pizza oven, bbq and wine fridge
- Solar heated swimming pool and children's playground
- Huge master suite with WIR and five star ensuite
- 3 further BRs occupy this wing, with BIRs and desks
- Privatised 5th BR with flexibility for office/gym use
- Oversized main bathroom and additional powder room
- Customised joinery throughout the entire home
- Polished concrete floors with hydronic slab heating
- R/C air conditioning acclimates the home in Summer



**Lee Martin**  
**03 5297 3888**



Ground Floor



Site Plan

Approx House Area 495m<sup>2</sup>  
Approx Land Area 4,001m<sup>2</sup>

Whilst [bwr.com.au](http://bwr.com.au) has made every attempt to ensure the accuracy of the floor plan contained here, measurements are approximate and no responsibility is taken for any error, omission, or mis-statement. This plan is for illustrative purposes only.

## 217 Melaluka Road, Leopold

bellarine **b**property