



8 Seashell Place Curlewis VIC

5 3 3

The Feel:

Commanding attention within the prestigious Baywater Estate, this immaculate 4BR family home oozes sophistication and class, while commanding beautiful bayside views a stone throw from the shoreline. Modern, contemporary design meets extreme comfort across two expansive levels, offering a blissful retreat for all to enjoy.

The Facts:

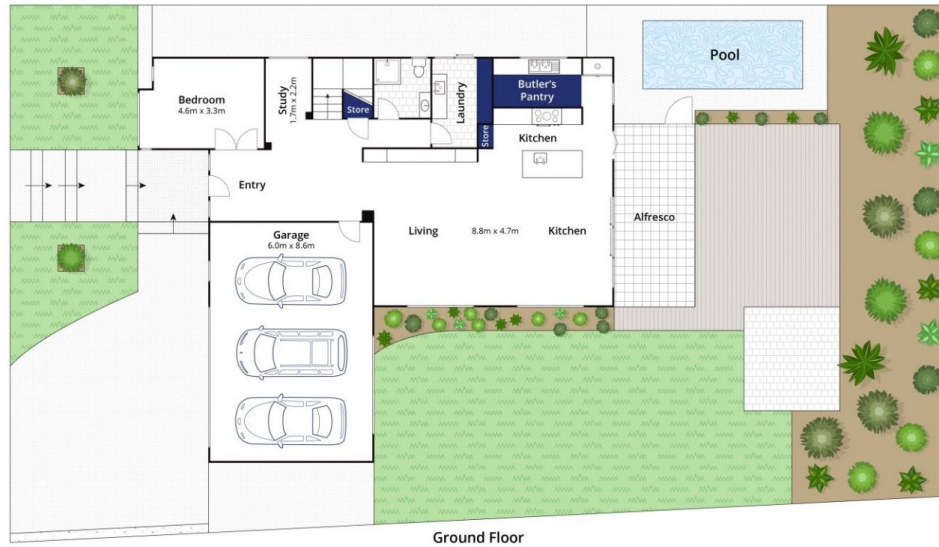
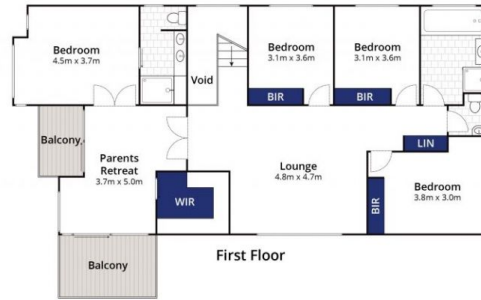
- 676 sqm approx. in the prestigious Baywater Estate, Curlewis
- Set amongst established homes in a pristine bayside location
- Heightened ceilings throughout the open plan living zone
- Study nook and media room offering flexibility as a 5th BR
- Kitchen with stone benches, 90cm gas cooktop and Miele double ovens
- Well fitted butlers pantry and bi-fold servery to outdoor alfresco
- Expansive outdoor alfresco with cafe blinds for year long enjoyment
- Solar heated swimming pool completes the outdoor oasis

Land Size : 676 sqm

View : <https://www.bellarineproperty.com.au/4920576>



Lee Martin
03 5297 3888



Approx House Area 260m²
Approx Land Area 676m²

Whilst bwrm.com.au has made every attempt to ensure the accuracy of the floor plan contained here, measurements are approximate and no responsibility is taken for any error, omission, or mis-statement. This plan is for illustrative purposes only.

8 Seashell Place, Curlewis

bellarine **b**property