



## 2 Mann Street Ocean Grove VIC

4 3 2

### The Feel:

Boasting an enviable coastal position between the Barwon Estuary and picturesque Blue Lake, is an opportunity to purchase a sprawling family home on a rarely offered 1214m2 corner allotment.

Enjoying stunning 'bushland' vistas from every window, this solid home provides a superb family floorplan for cosmetic renovation; all within moments of town, primary school and beaches.

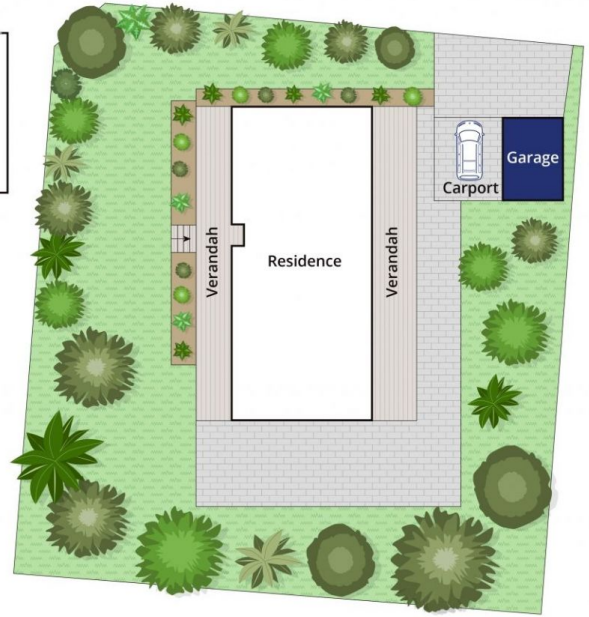
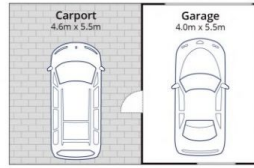
### The Facts:

- Country style home nestled by coastal moonahs on 1214sqm approx.
- Solid brick construction with family floorplan and central living zone
- Split level OP living with sliding doors to expansive covered entertaining
- Wraparound veranda, parquet floors, exposed beams, and cedar windows
- Kitchen with great bench space, 5 burner gas hob and updated wall oven
- Generously sized minor BRs with WIRs, bathroom and shower room

**Price** : \$ 991,590  
**Land Size** : 1214 sqm  
**View** : <https://www.bellarineproperty.com.au/48524>  
38



**Dan Halsey**  
03 5254 3100



Whilst [bwr.com.au](http://bwr.com.au) has made every attempt to ensure the accuracy of the floor plan contained here, measurements are approximate and no responsibility is taken for any error, omission, or mis-statement. This plan is for illustrative purposes only.

## 2 Mann Street, Ocean Grove

bellarine **b**property