



2/31 Trevally Drive Ocean Grove VIC

4 2 2

The Feel:

With generous accommodation, fantastic indoor and outdoor entertaining options, views towards Point Lonsdale, and a location that is close to the beach, Old Grove town centre, schools and more, this architectural home lends itself to an easy family lifestyle or relaxed holidays.

The Facts:

- Architectural feel with quality fittings and finishes throughout
- Split level design creates a naturally zoned floorplan, ideal for family life
- Generous courtyard style garden links to the kitchen & dining area for relaxed entertaining
- Large family room with surround sound
- Multiple outdoor entertaining spaces
- Kitchen includes stone bench tops, gas cooktop and breakfast bar
- Commercial construction ensures the long lasting quality & comfort of this unique home
- Upstairs, spacious master bed boasts luxe en suite & walk-in robe

Price : \$ 925,000

Land Size : 343 sqm

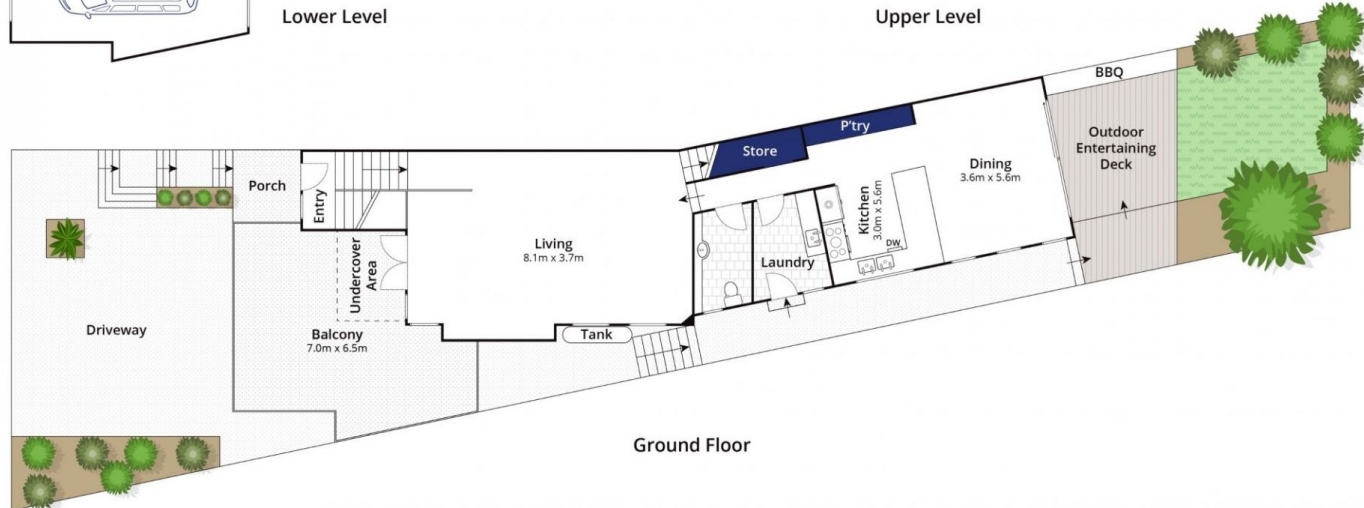
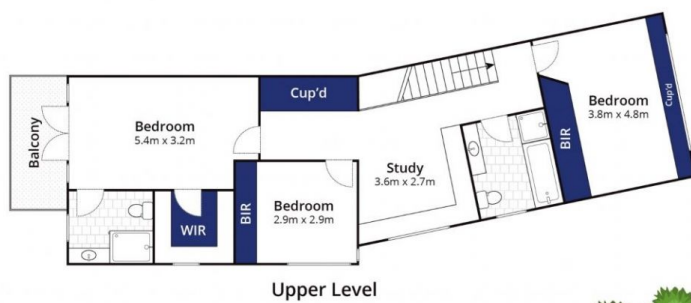
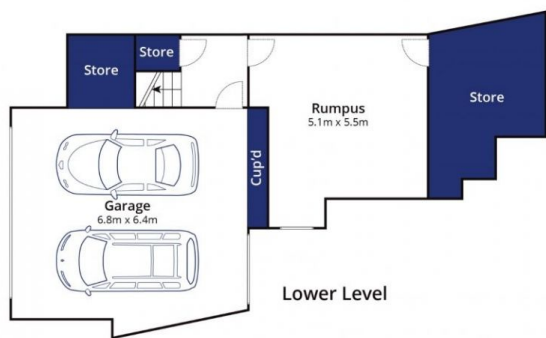
View : <https://www.bellarineproperty.com.au/4781702>



Toby Lee
03 5254 3100



Dan Halsey
03 5254 3100



Approx House Area 280m²

Approx Land Area 353m²

Whilst bwr.com.au has made every attempt to ensure the accuracy of the floor plan contained here, measurements are approximate and no responsibility is taken for any error, omission, or mis-statement. This plan is for illustrative purposes only.

2/31 Trevally Drive, Ocean Grove

bellarine **b**property