



22 Plantation Drive Connewarre VIC

6 3 4

The Feel:

This remarkable home offers space, a resort-style lifestyle, with an award winning golf course right at your back door. Elegantly designed for family comfort this true entertainer offers seamless flow between indoors and out, where luxurious pool and fairway views form a stunning backdrop to everyday life.

The Facts:

- Stunning 50sq home overlooking the 5th hole of the award winning Creek Course
- 885m2 approx. allotment set within a mix of colourful coastal, and native gardens
- Grand open plan living with large dining zone perfect for big family celebrations
- Bi-fold doors open to an expansive entertaining deck for BBQs with a view
- Solar heated in-ground pool surrounded by low maintenance paving and astroturf
- Large lawn space for backyard cricket, gated side area for pets or kids with sandpit
- Kitchen with plenty of drawers and prep space, SMEG apps and butler's pantry

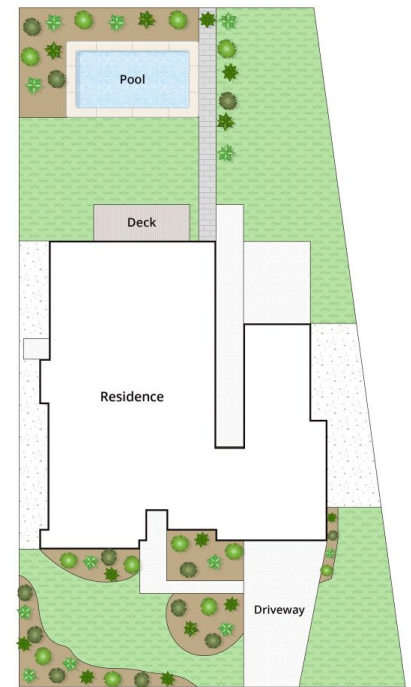
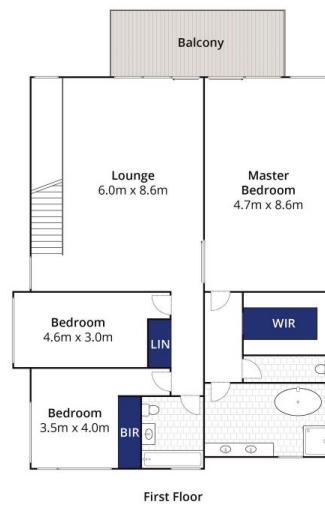
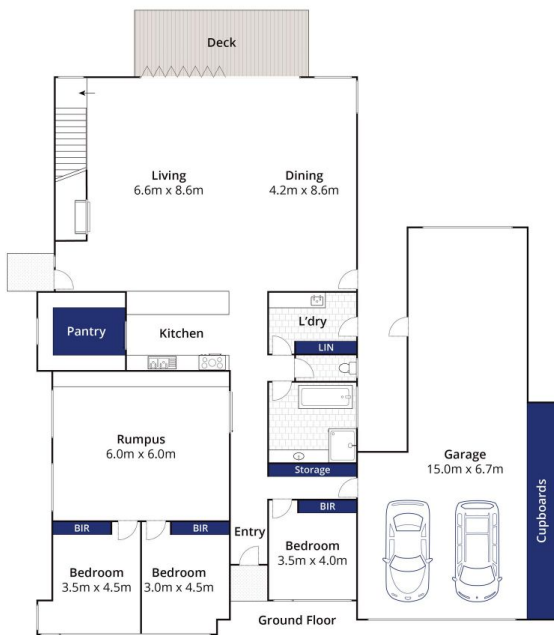
Price : \$ 1,430,000
Land Size : 885 sqm
View : <https://www.bellarineproperty.com.au/4715923>



Levi Turner
03 5254 3100



Peta Walter
03 5254 3100



Whilst bwrn.com.au has made every attempt to ensure the accuracy of the floor plan contained here, measurements are approximate and no responsibility is taken for any error, omission, or mis-statement. This plan is for illustrative purposes only.

22 Plantation Drive, Barwon Heads

bellarine **b** property