



10 Lawrenny Court Barwon Heads VIC

4 2 2

The Feel:

Ideally situated at the end of a quiet court, shrouded in beautiful native gardens and a vacant reserve to the rear, this tranquil four bedroom home on 725m² is the perfect setting to raise a family. Organically designed to integrate within its natural environment, featuring quality timber doors and windows, decking to the perimeter and earthy tones throughout, you will feel a sense of relaxation and immersion within nature as soon as you enter the front door. Popular with families, this location offers excellent access on foot to nearby parklands, the local Primary School and the village centre.

The Facts:

- Spacious open plan living, kitchen and dining
- Extra living space offers flexibility as an 5th BR
- Ample storage, stone benchtops and 900m SS apps
- Undercover alfresco deck complete with pizza oven
- Landscaped gardens, veggie patch, citrus trees
- 4BR, plus study, master with ensuite and WIR
- Evap. cooling, ducted heating, outdoor shower, DLUG

The Owner Loves....

Price : \$ 1,070,000

Land Size : 725 sqm

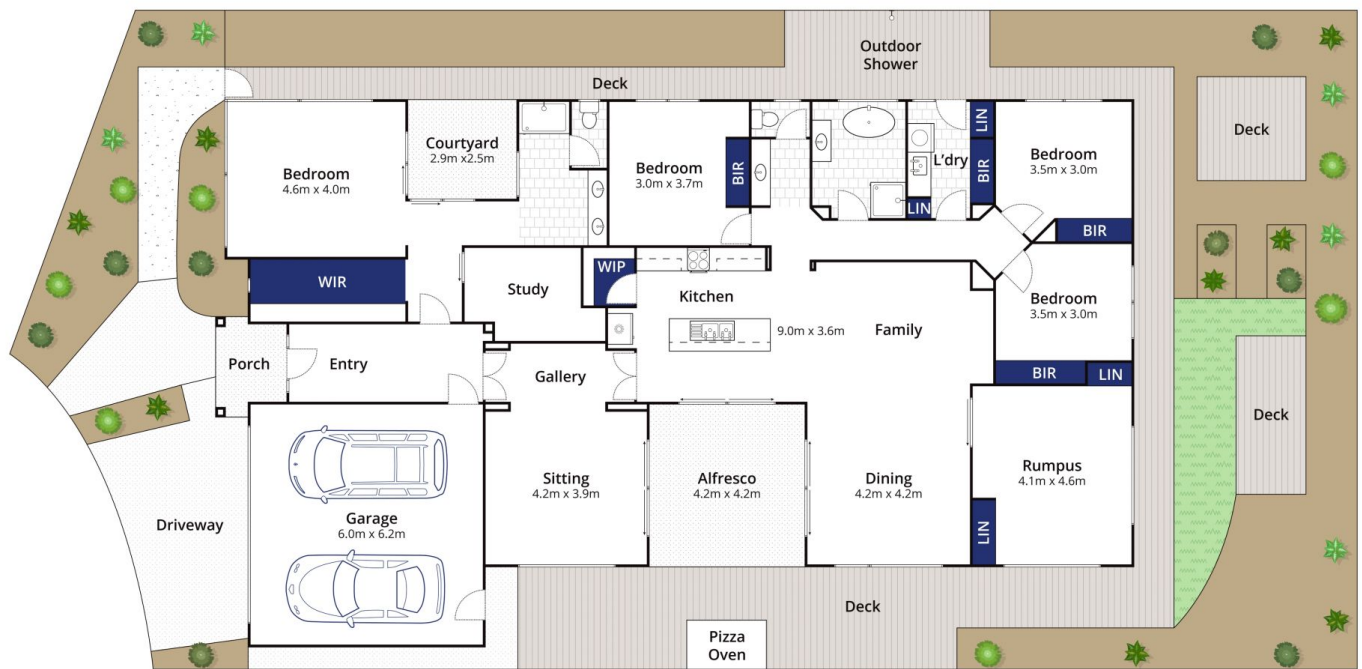
View : <https://www.bellarineproperty.com.au/4624879>



Peta Walter
03 5254 3100



Levi Turner
03 5254 3100



Approx. Area 246m²

Whilst bwrn.com.au has made every attempt to ensure the accuracy of the floor plan contained here, measurements are approximate and no responsibility is taken for any error, omission, or mis-statement. This plan is for illustrative purposes only.

10 Lawrenny Court, Barwon Heads

bellarine **b**property