



#### 44 Penleigh Crescent Ocean Grove VIC

4 2 2

##### The Feel:

Timeless design evokes a modern coastal aesthetic, a haven for relaxed beachside living and pure sophistication. High ceilings, abundant light and a peaceful outlook across the neighbouring rural block enhance the sense of space of this versatile family home. Impressive proportions of some 40squares comprise 4 large bedrooms, a study, dining zone, open plan living, and a central theatre room. Beyond the incredible 9x7m double garage, lies peaceful, expansive outdoor living and low maintenance landscaping on 620sqm (approx). Central to schools, shops and the local children's park and lake, this quality-built home in a quiet cul-de-sac provides everything a family needs for rest, work and play.

##### The Facts:

- Set on an easy care 620sqm (approx) block in quiet cul-de-sac near the children's park & lake
- Sprawling home offers open plan living & dining zones, home theatre, & study
- Grand scale family living with high ceilings & impressive finishes throughout
- Show-stopping kitchen draws people together in the heart

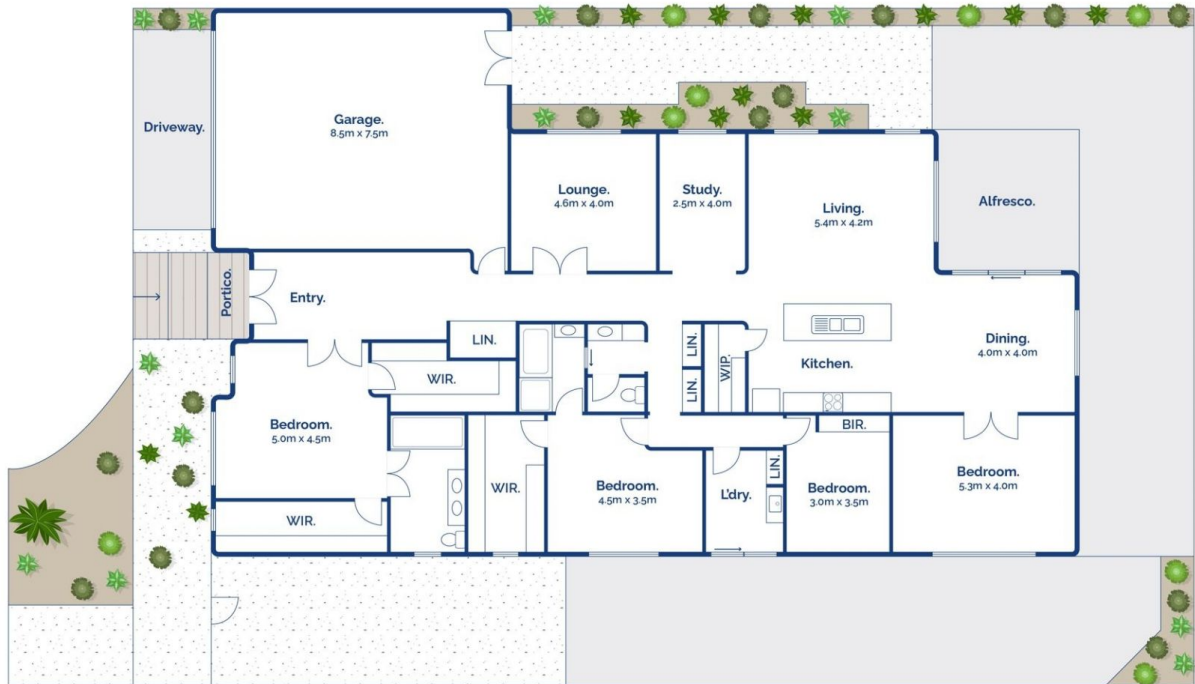
**Price** : \$ 985,000  
**Land Size** : 620 sqm  
**View** : <https://www.bellarineproperty.com.au/4551997>



**Christian Bartley**  
03 5254 3100



**Dan Halsey**  
03 5254 3100



4 2 2

## 44 Penleigh Crescent, Ocean Grove

bellarine **b** property  
rentals. commercial. sales. projects.

Whilst [bwrn.com.au](http://bwrn.com.au) has made every attempt to ensure the accuracy of the floor plan contained here, measurements are approximate and no responsibility is taken for any error, omission, or mis-statement. This plan is for illustrative purposes only.