

30-32 Normandy Crescent Ocean Grove VIC

4 2 4

Expressions Of Interest Closing Thursday November 1st at 4.30pm

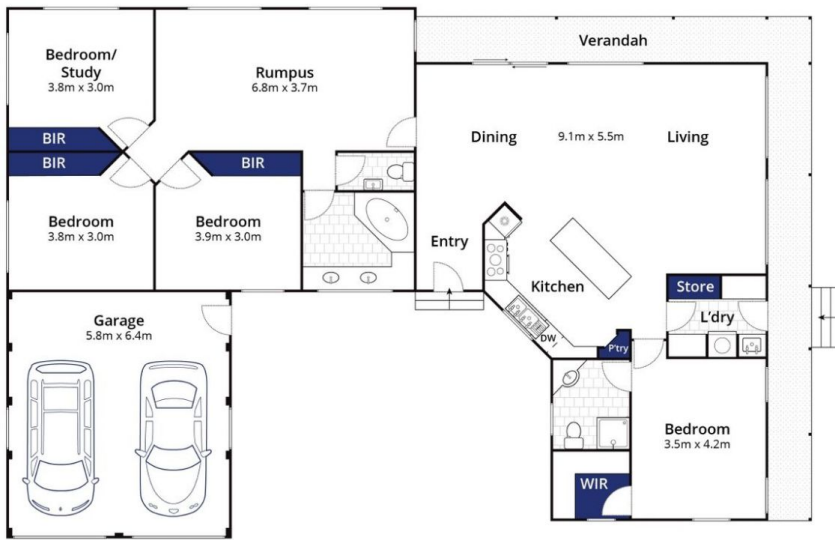
Land Size : 4007 sqm
View : <https://www.bellarineproperty.com.au/4458953>

Perched high on the hilltops in the coveted Belle Vue Estate, overlooking the stunning Barwon Estuary and Lake Connemara, this family home offers plenty of space for your family to grow, against the backdrop of expansive, ever-changing views. Exceptionally private, and with cooling southern breezes throughout summertime, enjoy being tucked away in your own rural oasis yet close enough to all you will ever need in bustling Ocean Grove!

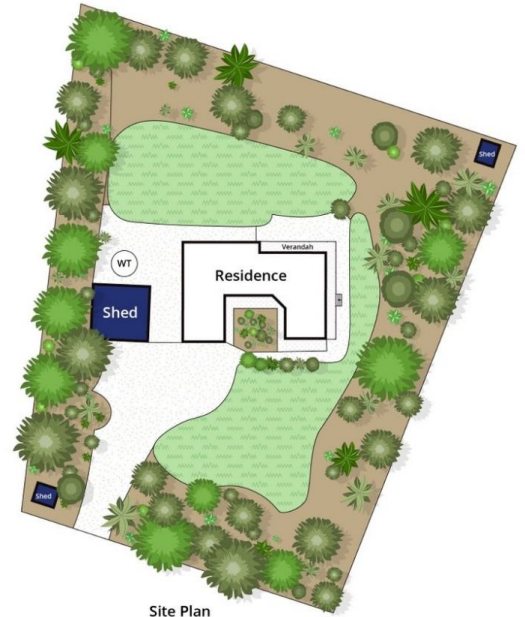


Dan Halsey
03 5254 3100

- Set atop the rolling hills of the Belle Vue Estate, overlooking Lake Connemara and Barwon Estuary
- Timelessly elegant limestone construction with versatile indoor zones perfect for a growing family
- Surrounded by plenty of lush lawn space and colourful native gardens on just under an acre of land
- Ornamental grapevine provides a lush green canopy and cooling shade upon entry to the home
- Open living is treated to estuary views with a wraparound veranda to fully embrace outdoor living
- Step down to a paved terrace for outdoor dining beneath



Ground Floor



Site Plan

Approx. Area 170m²

Whilst bwrn.com.au has made every attempt to ensure the accuracy of the floor plan contained here, measurements are approximate and no responsibility is taken for any error, omission, or mis-statement. This plan is for illustrative purposes only.

30-32 Normandy Cresnet, Ocean Grove

bellarine  property