



**32-34 Hitchcock Avenue Barwon Heads VIC**

6 🏠 3 🚗 2 🚗

Expressions Of Interest Closing Monday the 15th Of October at 4pm

**Land Size** : 900 sqm  
**View** : <https://www.bellarineproperty.com.au/4452153>

An unprecedented opportunity awaits you here at this prestigious Barwon Heads address, nestled into the southern end of Hitchcock Avenue on an extraordinary 900m2 (approx) allotment. This truly is the perfect location to set yourself up for a dreamy seaside lifestyle, mere steps from the village centre, beautiful Barwon River and first class surf beaches.

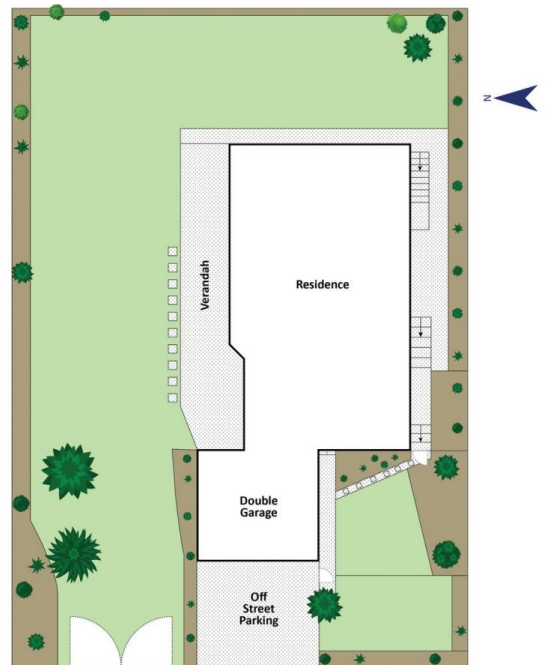
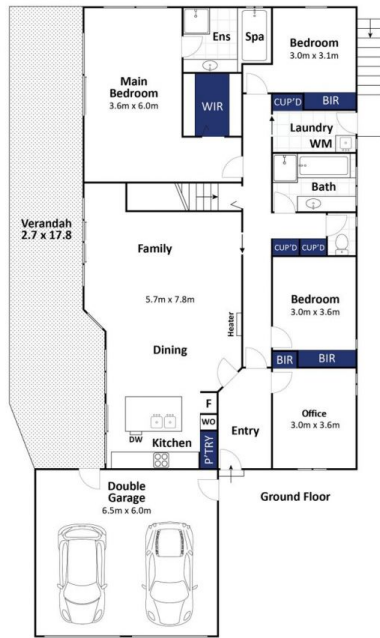
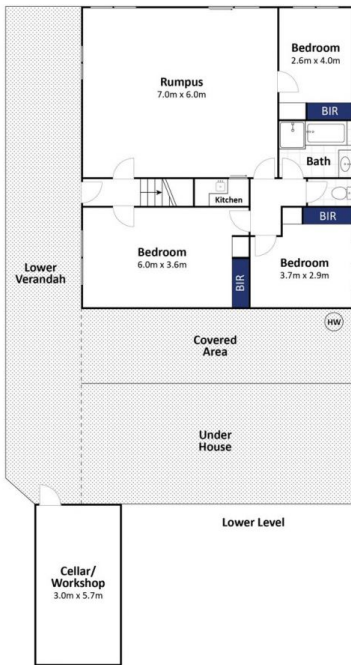
- Absolute village centre placement makes this one of the most desirable addresses in Barwon Heads
- The existing six bedroom home enjoys due north orientation on the slightly elevated, double allotment
- Set across a commodious two storey layout, well-equipped to cater for dual occupancy (STCA) or multiple families
- The upper level plays host to the OP living area, suspended in the treetops with a beautiful hardwood verandah
- Cook up a storm for family and friends in your upgraded timber kitchen boasting Miele and Smeg appliances
- 3BRs also occupy this level, the master offering a copious



**Levi Turner**  
**03 5254 3100**



**Peta Walter**  
**03 5254 3100**



every attempt to ensure the accuracy of the floor plan contained here, measurements are approximate and no responsibility is taken for any error, omission, or mis-statement. This plan is for illustrative purposes only.

# 32-34 Hitchcock Avenue, Barwon Heads

