



3 Wintersun Court Clifton Springs VIC

4 3 4

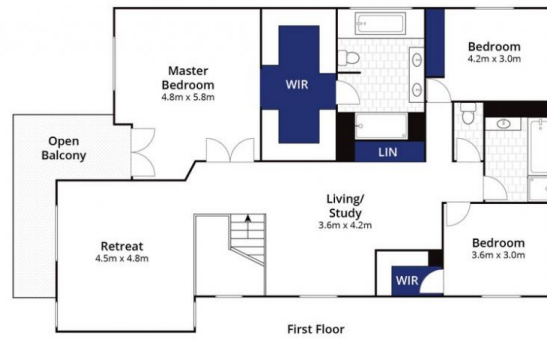
A luxurious family home all with practical living in mind. Boasting several separate living areas plus an open plan kitchen linking to the outdoor alfresco area, there is plenty of room for everyone to relish in this fabulous coastal residence. Beautifully maintained and cared for with high ceilings and plush carpets throughout, making you feel instantly at home. Set on a quiet cul-de-sac in coastal Clifton Springs, you'll have everything at your fingertips, right in the heart of the Bellarine.

Price : \$ 845,000
Land Size : 820 sqm
View : <https://www.bellarineproperty.com.au/4373561>



Lee Martin
03 5297 3888

- This impressive residence truly makes the most of panoramic views of Geelong, Corio Bay and the You Yangs
- A landscaped tiered garden leads up to the front access, a stylish formal entrance to impress your guests
- Unpack the groceries with ease, practical entry to laundry/kitchen from the side driveway - all on one level
- Not one, but 2 DLUG for everyday use or securely lock up your pride & joy - be it a boat, bike or classic car
- Opulent open plan living on the lower level, forms the central family/entertaining hub of this home
- The kitchen is simply an entertainers dream - stone bench



Approx. Area 301m²

Whilst bwrm.com.au has made every attempt to ensure the accuracy of the floor plan contained here, measurements are approximate and no responsibility is taken for any error, omission, or mis-statement. This plan is for illustrative purposes only.

3 Wintersun Court, Clifton Springs

bellarine **b**property