



1/68 Sheepwash Road Barwon Heads VIC

3 2 2

In the quiet and family friendly 'river end' of town, is a freshly updated coastal gem just waiting for someone to start creating new memories of their own. Whether you're looking for a fantastic lock up and leave holiday home that provides ample room for friends and family, an investment, or low maintenance downsize - prepare to walk in and be very pleasantly surprised!

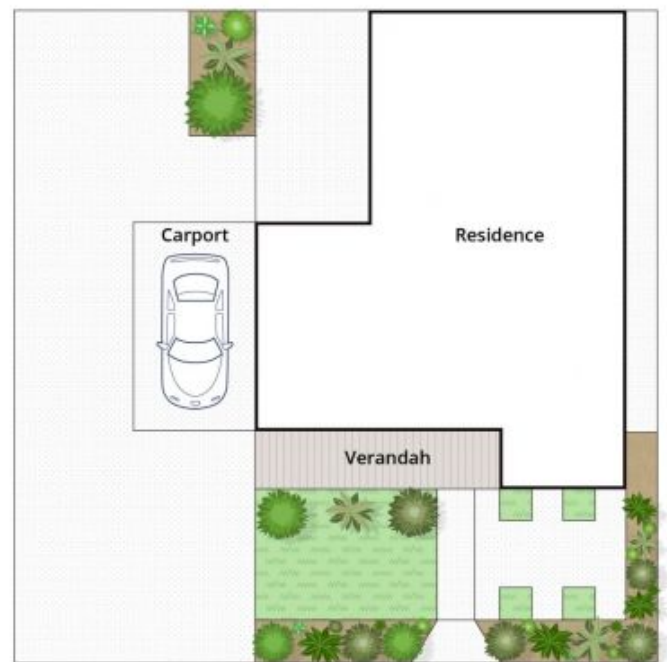
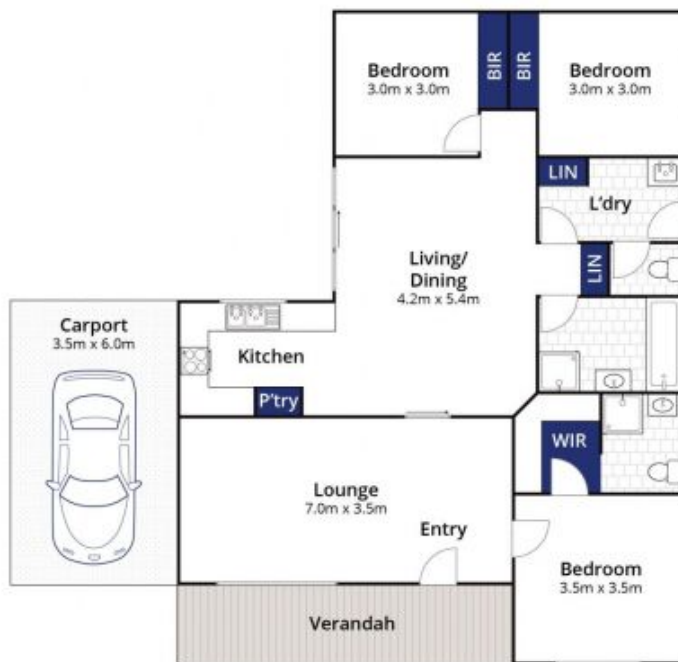
- Refreshed inside and out, this surprising 3BR, 2 bathroom, dual living home will cater to many
- Affordable entry into the sought after Barwon Heads coastal market, with high rental demand
- Fantastic low maintenance lock up and leave, or immaculate downsize with updated interiors
- Behind a neat and secure fence line with screening trees is an even neater front garden
- There's room to sit under the veranda, and raised veggie beds for even a part-time green thumb
- Upon entry, the home feels open with views to 2 living areas out to the north facing courtyard
- Polished concrete flooring runs throughout living and wet areas, gifting a contemporary finish
- Neutral interiors, abundant northern light, and LED lighting

Land Size : 330 sqm

View : <https://www.bellarineproperty.com.au/43530>
10



Levi Turner
03 5254 3100



Whilst bwrn.com.au has made every attempt to ensure the accuracy of the floor plan contained here, measurements are approximate and no responsibility is taken for any error, omission, or mis-statement. This plan is for illustrative purposes only.

1/68 Sheepwash Road, Barwon Heads

bellarine **b** property