

1 Cliff Edge Court Clifton Springs VIC

4 2 4

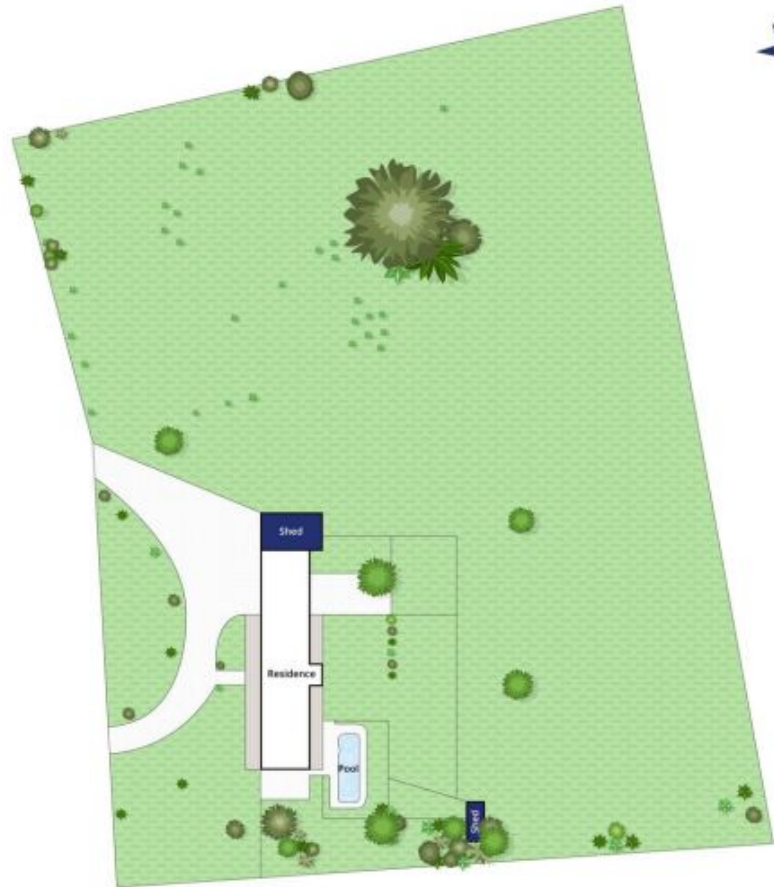
In a highly sought after court location with absolutely gorgeous views across Corio Bay, this well-appointed family home is one of a kind. Not only will you be surrounded by just over 3 acres of prime rural land, but enjoy having direct access to Beacon Point Reserve leading straight down to the water.

Price : \$ 1,270,000
Land Size : 3.1 Acres
View : <https://www.bellarineproperty.com.au/4305587>

- Contemporary 4BR dual living residence set on over 3 Acres in a sought after coastal court
- Uninterrupted views across Corio Bay and beyond, with the waterfront only metres away
- Quiet rural pocket with only one neighbour, with adjoining reserve ensuring a lifetime view
- Open living with a modern farmhouse feel offers exceptional indoor/outdoor flow
- Picture windows to the kitchen frame the relaxed rural vista and blue waters beyond
- Warm oak adorns the benchtops and a vast island will attract visitors and family to sit and chat
- Home cooks will love the high end 'Belling' oven with classic styling and modern functionality
- Daily living is beneath rustic exposed beams, with formal dining and a lounge area



Lee Martin
03 5297 3888



Whilst bwrn.com.au has made every attempt to ensure the accuracy of the floor plan contained here, measurements are approximate and no responsibility is taken for any error, omission, or mis-statement. This plan is for illustrative purposes only.

1 Cliff Edge Court, Clifton Springs