



24 Central Road Clifton Springs VIC

3 2 2

As the Clifton Springs market enjoys continued growth, this solid beachside residence with great tenants already in place is the perfect entry or affordable investment. Enjoy ground level water glimpses or bay views from a potential second level (STCA), with a great existing floorplan this 3 bedroom home could be a very rewarding renovation project, with minimal effort!

Price : \$ 433,000
Land Size : 583 sqm
View : <https://www.bellarineproperty.com.au/4301879>

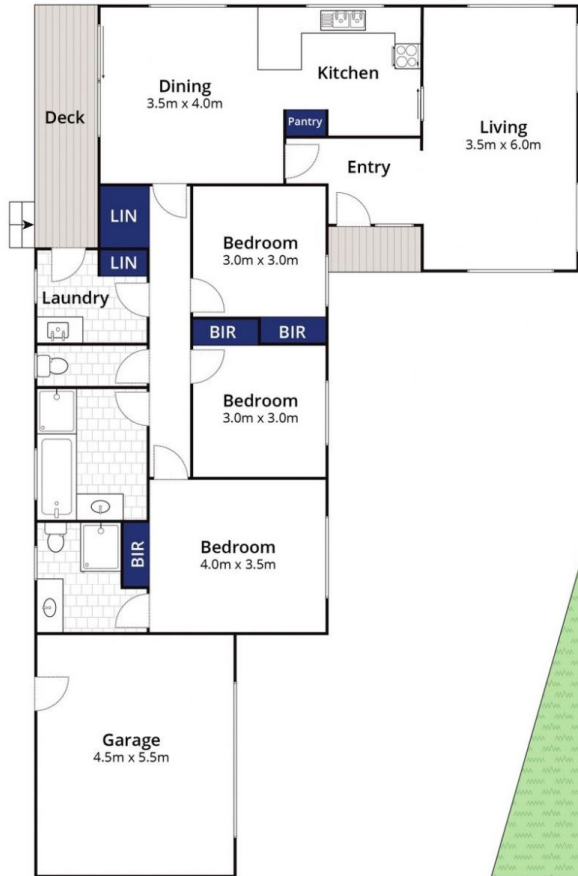
- 3BR solid brick home set on a corner 583sqm (approx.) allotment, with north facing living and dining
- Add your own style with a cosmetic update utilising the practical existing floorplan
- Water glimpses at ground level, with potential for stunning bay views from a second storey (STCA)
- Great investment opportunity with low maintenance gardens and tenants already in place
- Bright neutral interiors with well-placed windows to capture abundant northern light
- A central kitchen separates dining and living, providing families with two distinct zones for daily life
- Keep the cooking, storage and wash up configuration but update the joinery and appliances- easy!
- Sliding doors exit onto a covered deck that could be



Christian Bartley
03 5254 3100



Lee Martin
03 5297 3888



Whilst bwrm.com.au has made every attempt to ensure the accuracy of the floor plan contained here, measurements are approximate and no responsibility is taken for any error, omission, or mis-statement. This plan is for illustrative purposes only.

24 Central Road, Clifton Springs

bellarine  property