



33 Shell Road Ocean Grove VIC

4 1 1

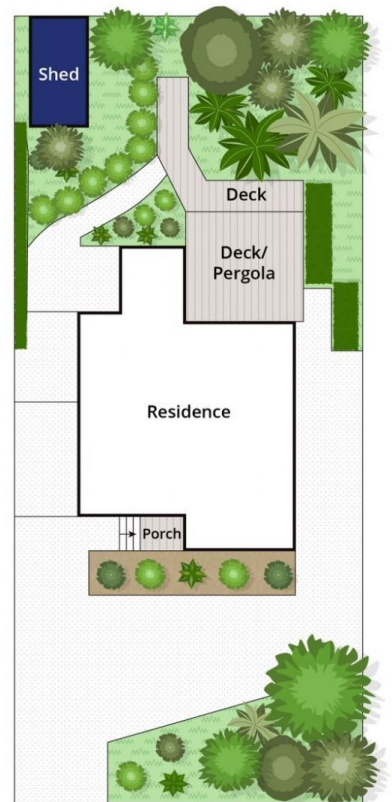
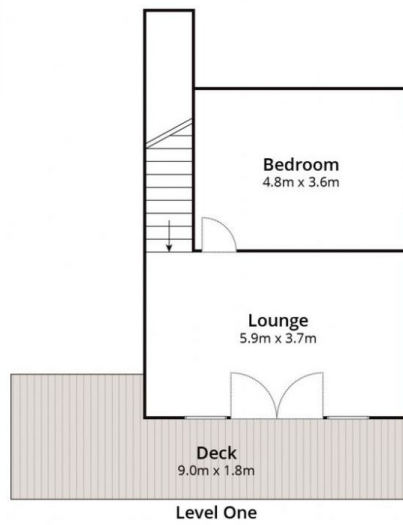
Boasting a bushland position with direct access to the picturesque acres of Kingston Park behind, this large 4-bedroom home features a renovated kitchen and wet areas and an open, light-filled plan. Delivering obvious wow factor! Located directly opposite sporting ovals, pool and schools, and with ocean glimpses, this warm family home is a must see!

- Easy care 664sqm (approx.) block with own access directly into the Kingston Conservation Zone
- Families will love being so close to the aquatic centre, pre/primary and secondary schools
- Beautifully maintained family home, with fresh new updates and masterful zoning for everyday life
- Established native front garden provides privacy, and a tranquil outlook from inside the home
- A covered portico leads inside to a light-filled lounge with an ambient gas log fire to gather around
- The updated kitchen features elegant soft close joinery, with fully fitted customised pantry
- LED lighting highlights a long glass splashback, 90cm ILVE oven, and gleaming thick stone benchtops
- Premium storage, and pull out drawers ensure this kitchen

Price : \$ 725,000
Land Size : 664 sqm
View : <https://www.bellarineproperty.com.au/42979>
 62



Toby Lee
 03 5254 3100



Whilst bwrn.com.au has made every attempt to ensure the accuracy of the floor plan contained here, measurements are approximate and no responsibility is taken for any error, omission, or mis-statement. This plan is for illustrative purposes only.

33 Shell Road, Ocean Grove

bellarine **b** property