



64 Stevens Street Portarlington VIC

3 1

With an envious inner village location only 400metres to the thriving Portarlington shopping strip and foreshore, historical 'Mulane Cottage' is sure to capture the hearts of many. Set upon an outstanding block and lovingly cared for and restored over the years since it's construction in 1872, it's now time for a whole new chapter. Will you become a part of local history?

Price : \$ 822,100
Land Size : 1009 sqm
View : <https://www.bellarineproperty.com.au/4295694>

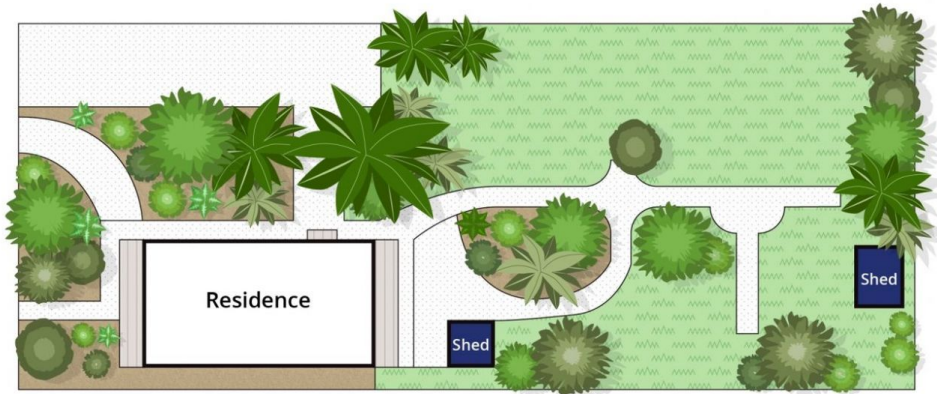
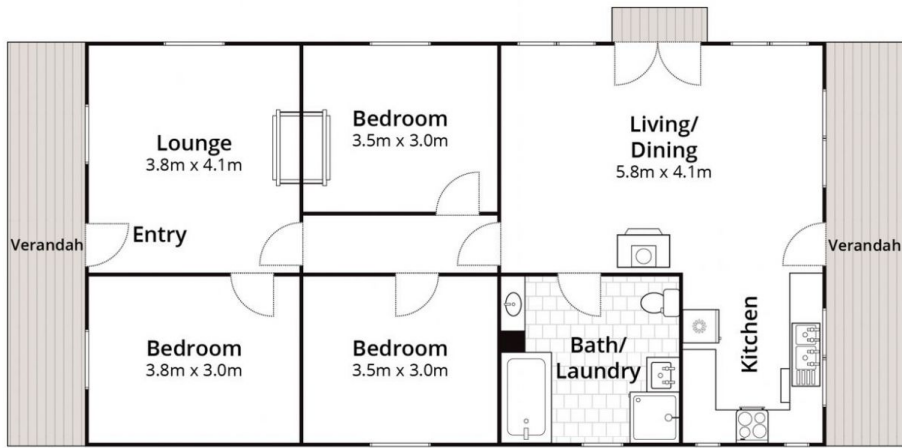
- Nestled by cottage gardens behind picket fencing, surrounded by mature shady trees
- Victorian architecture and weatherboard construction, with period features throughout
- A walk to shops and cafes in booming Portarlington, as well as the Docklands Ferry Terminal
- Thoughtfully restored and updated with modern touches to spacious kitchen and bathroom
- Documented ownership records dating back to 1872, when first built by Joseph Mulane
- North facing sitting room with ornate fireplace looks out to delightful cottage gardens
- Off the central hallway, 3 large carpeted bedrooms offer plenty of space for a family or guests
- Open plan living is bright and breezy, with doors that open



Christian Bartley
03 5254 3100



Lee Martin
03 5297 3888



Whilst bwrn.com.au has made every attempt to ensure the accuracy of the floor plan contained here, measurements are approximate and no responsibility is taken for any error, omission, or mis-statement. This plan is for illustrative purposes only.

64 Stevens Street, Portarlington

bellarine **b**property