



### 1/31 Cottesloe Drive Barwon Heads VIC

2 1 1

Bigger is not necessarily better and this cosy Cottesloe cottage is high proof that maximum function across a minimalist floor plan can be achieved with clever design. Wonderfully modern and private, boasting a fresh neutral interior, charming garden outlooks and plenty of external living space, this home presents as the ultimate downsize, holiday rental property or weekender in beautifully popular Barwon Heads.

- Heightened ceilings are noted upon entry, gifting extended natural light and sunshine throughout the interior
- Sliding door access is achieved onto the outdoor patio, privatised by established vines and mature native trees
- Enjoying the afternoon sun, this outdoor living space is the perfect hosting point for entertaining friends and family
- The alternate outdoor deck is where you'll enjoy your morning coffee and the local papers in your own time
- The open plan living, meals and kitchen area offers high function on a humble scale, amplified by raked ceilings
- Stainless steel appliances, subway tiles and a spacious breakfast bench are handy assets to the kitchen itself
- Two bedrooms are of generous size, one with a roomy walk in robe, the other with well fitted built-ins

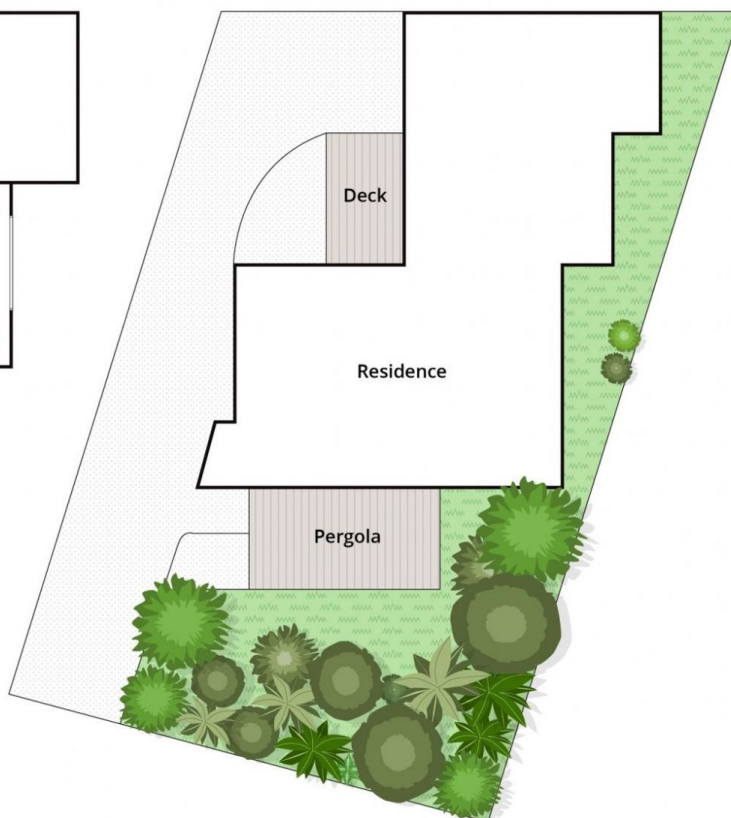
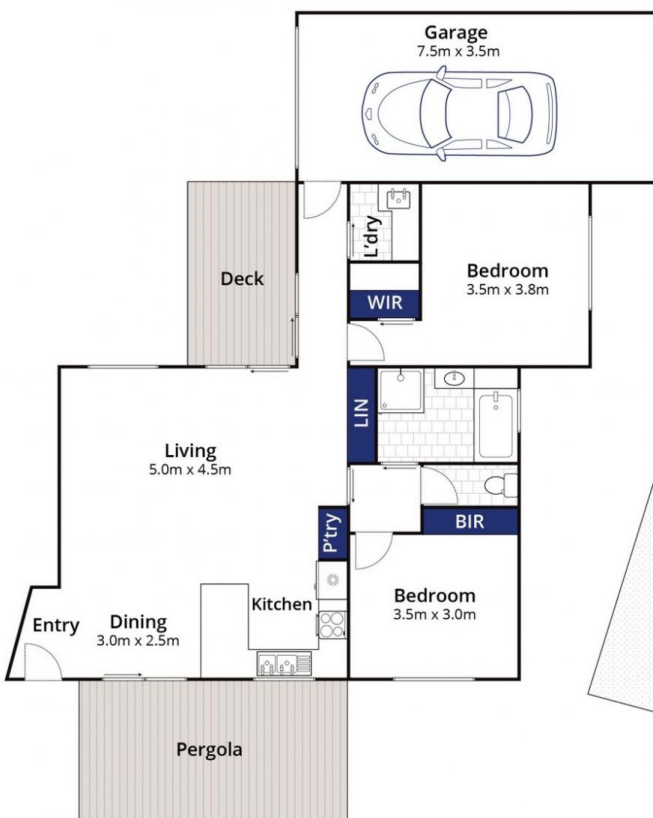
**View :** <https://www.bellarineproperty.com.au/4290899>



**Levi Turner**  
03 5254 3100



**Peta Walter**  
03 5254 3100



Whilst [bwrm.com.au](http://bwrm.com.au) has made every attempt to ensure the accuracy of the floor plan contained here, measurements are approximate and no responsibility is taken for any error, omission, or mis-statement. This plan is for illustrative purposes only.

**1/31 Cottosloe Drive, Barwon Heads**

bellarine **b** property