



231-249 Whitcombes Road Drysdale VIC

4 🏠 3 🚗 6 🚗

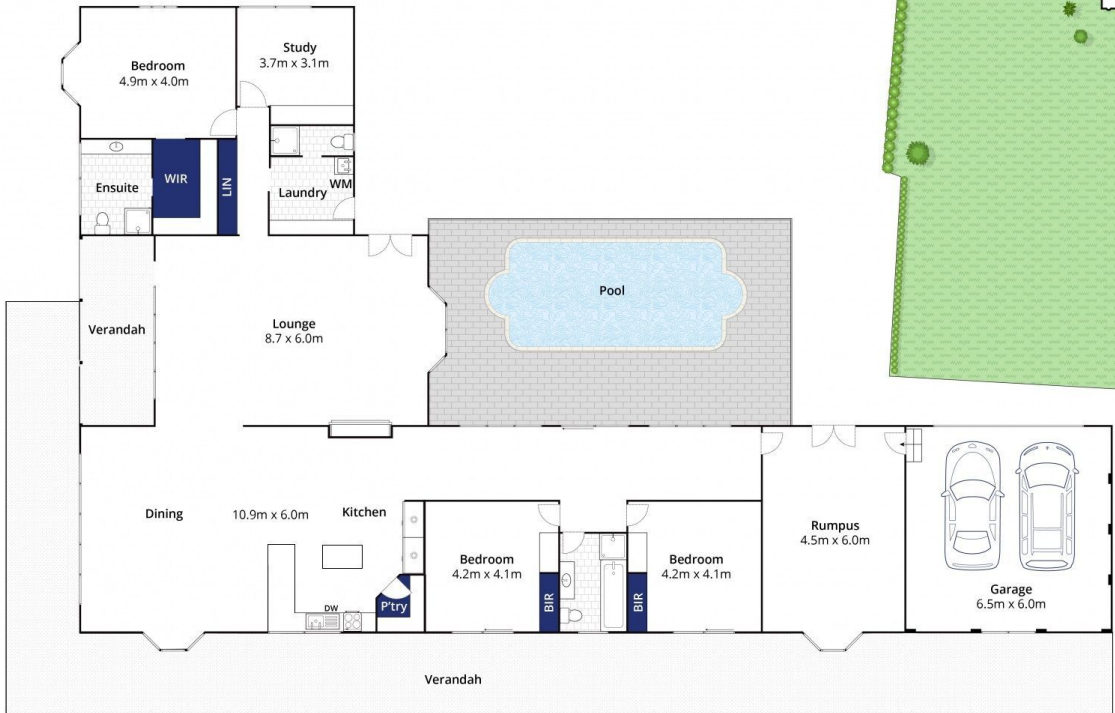
Picture waking up to a glorious sunrise over the rolling hills of Drysdale, Clifton Springs and beyond, coffee in hand you take a seat on the wide verandah wondering how you lived any other way! With a superb hilltop position, this delightful property provides an outstanding lifestyle opportunity not to be missed, with the convenience of town and premier schooling only 5 minutes away.

Price : \$ 1,520,000
Land Size : 4.32 ha
View : <https://www.bellarineproperty.com.au/4242876>

- Original homestead with large addition, set on 11 Acres (approx.) 5 mins from Drysdale village
- The well-zoned family floorplan provides options for teenagers or possible B&B potential
- External and internal finishes incorporate recycled materials adding traditional character
- Entry to the property is down a long cypress-lined driveway, accessed by automatic gates
- A wide verandah wraps the north and west elevations for a quintessential country feel
- Upon entry, a large formal living space overlooks the north facing pool and farm boundary
- High ornate ceilings with large picture and bay windows inviting gorgeous views inside
- A recycled brick open fireplace in the living is a great spot



Lee Martin
03 5297 3888



Site Plan

Ground Floor

Approx. Area 293m²

Whilst bwr.com.au has made every attempt to ensure the accuracy of the floor plan contained here, measurements are approximate and no responsibility is taken for any error, omission, or mis-statement. This plan is for illustrative purposes only.

231-249 Whitcombes Road, Drysdale

bellarine  property