



8 Seashell Place Curlewis VIC

5 🏠 3 🚗 3 🚗

Where else will you find a spectacular new home with bay views at this price? Baywater Estate in Curlewis is emerging as an elite coastal suburb, where designer homes capture panoramic views over calm glistening waters toward the You Yangs and the nightlights of Geelong. Beach walks and boat ramps are only moments away or laze the day away around a saltwater pool in the privacy of your very own coastal sanctuary.

- Set on 676sqm (approx.) in the Baywater Estate, surrounded by beautiful homes and parklands
- Walk to the bay beach 500m away, an ever-changing backdrop of fishing boats and passing ships
- Outdoor entertaining zones extend out across two levels to capture northern sun and water views
- Striking and modern façade with pitched roof, coastal weatherboards, and architectural glazing
- Downstairs is family living at its finest, a light filled open plan domain opening out to an alfresco
- Timber laminate flooring creates seamless flow, through versatile living spaces for everyday life
- Heightened ceilings throughout the main living areas further enhance the sense of space and light

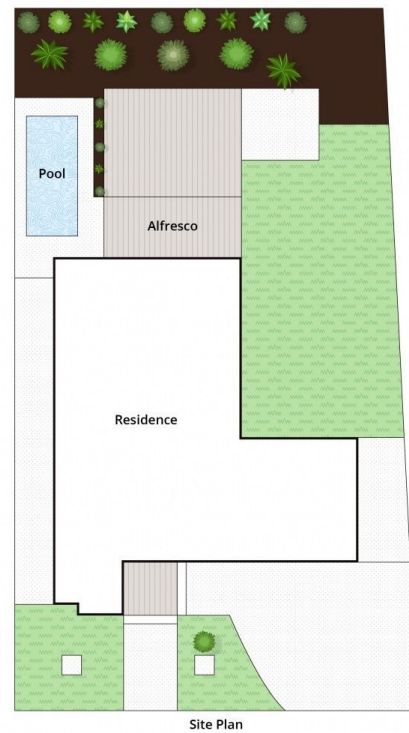
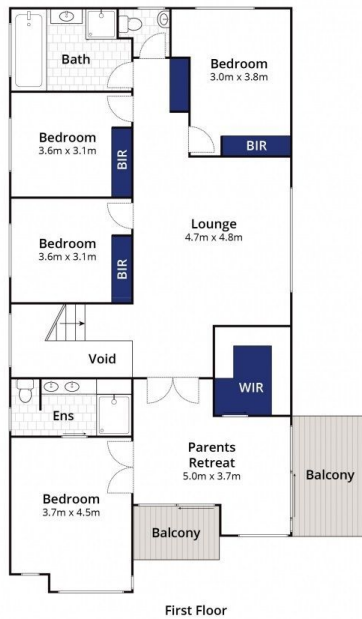
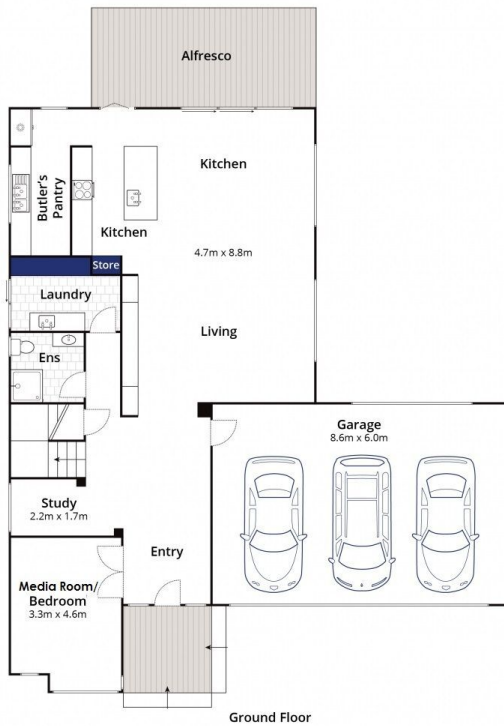
Land Size : 676 sqm
View : <https://www.bellarineproperty.com.au/4173835>



Lee Martin
03 5297 3888



Levi Turner
03 5254 3100



Approx. Area 260m²

Whilst bwrn.com.au has made every attempt to ensure the accuracy of the floor plan contained here, measurements are approximate and no responsibility is taken for any error, omission, or mis-statement. This plan is for illustrative purposes only.

8 Seashell Place, Curlewis