



#### 4-6 Reedy Lakes Court Leopold VIC

4 2 2

Wouldn't you love to have the best of both worlds? Plenty of wide open space to spread your wings, with all the conveniences of modern living at hand and the coast within 15 minutes? This traditional four bedroom home on 1421 sqm (approx), indulges you in the most central of locations, ensuring your lifestyle is enjoyable, balanced and conducive to today's busy standards.

- Highly desired northern orientation is enjoyed on the property, ensuring solar benefits are felt indoors and out
- Traditional verandahs cradle the low maintenance rendered facade, dually providing shade internally
- Hardwood timber floors and heightened ceilings gift a feeling of grandeur upon entry to the freshly painted home
- Families will appreciate the dual zones, with separate living and dining spaces providing plenty of space for all
- The commodious master suite boasts a large ensuite bathroom with oversized shower and walk in robe
- Entertainers will enjoy playing host in the renovated kitchen, complete with stone benchtops and European SS appliances
- A large butlers pantry is adjacently set, offering multi use as a utilities room with an over abundance of storage

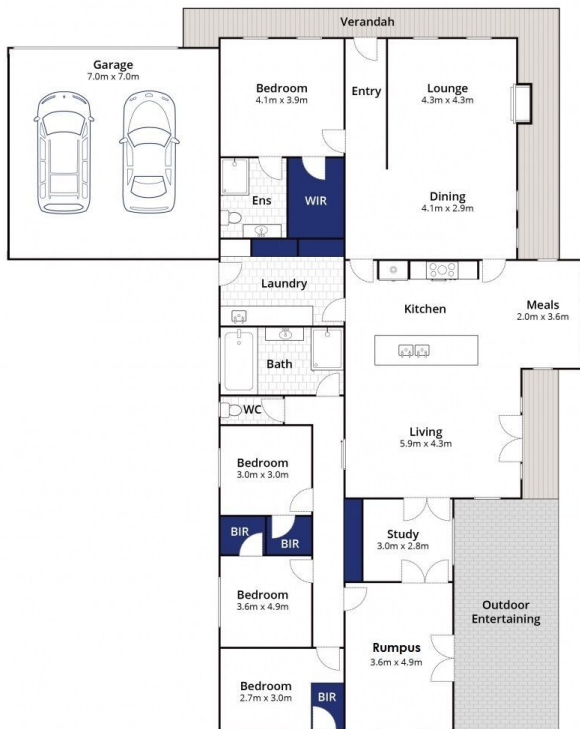
**Land Size** : 1421 sqm  
**View** : <https://www.bellarineproperty.com.au/41722>  
 50



**Lee Martin**  
 03 5297 3888



**Levi Turner**  
 03 5254 3100



Whilst [bwrn.com.au](http://bwrn.com.au) has made every attempt to ensure the accuracy of the floor plan contained here, measurements are approximate and no responsibility is taken for any error, omission, or mis-statement. This plan is for illustrative purposes only.

## 4-6 Reedy Lakes Court, Leopold

bellarine **b**property