



48 Bay Shore Avenue Clifton Springs VIC

3 1 2

Space, style and substance unite in this fabulously updated family home. Set on 724m² (approx.), revelling in the peace and privacy provided by mature gums, in a quiet pocket wrapped by Clifton Springs Golf course. Surrounded by low maintenance native gardens, and an enviable outdoor play area for the kids, you'll discover a thoughtful and private floorplan for a family to spread out - in absolute comfort.

- Elevated 724m² (approx.) block, with sought after north facing entertaining and native gardens
- Enjoy all year sun beneath the beautifully crafted undercover alfresco, whilst kids play in the cubby
- Quality renovation has been completed over recent years
- Quiet area nestled by Clifton Springs Golf course - dinner at the golf Club, and walk to the water
- Stone paths and retaining wall beds of native trees provide privacy from the street and neighbours
- Inside, the home feels fresh and new- in greys and white on floating bamboo timber flooring
- Kids can independently play in separate living zone, yet still feel connected to the main family hub
- Formal dining features double pendant lights, with a

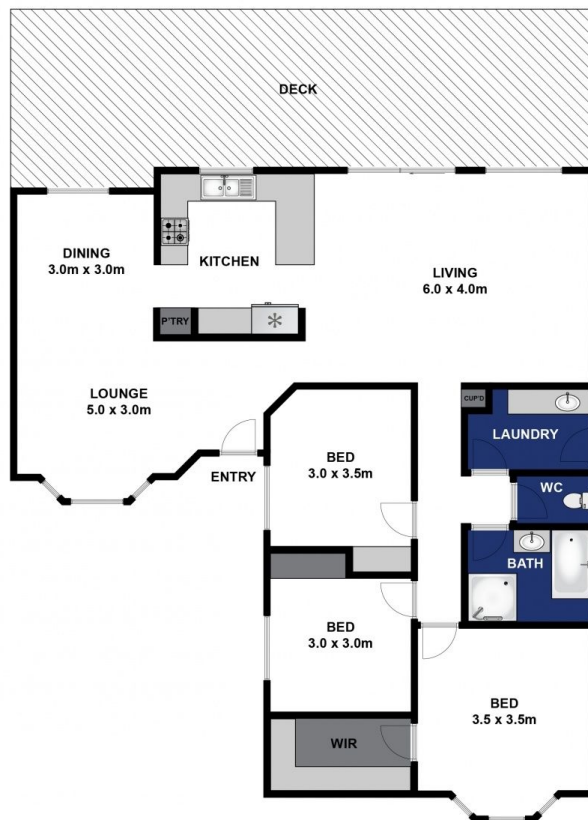
Price : \$ 472,000
Land Size : 724 sqm
View : <https://www.bellarineproperty.com.au/4117559>



Lee Martin
03 5297 3888



Levi Turner
03 5254 3100



Approx. Area 132m²

Whilst bwrn.com.au has made every attempt to ensure the accuracy of the floor plan contained here, measurements are approximate and no responsibility is taken for any error, omission, or mis-statement. This plan is for illustrative purposes only.

48 Bay Shore Avenue, Clifton Springs

bellarine  property