



6 Sylvan Lane Ocean Grove VIC

4 2 2

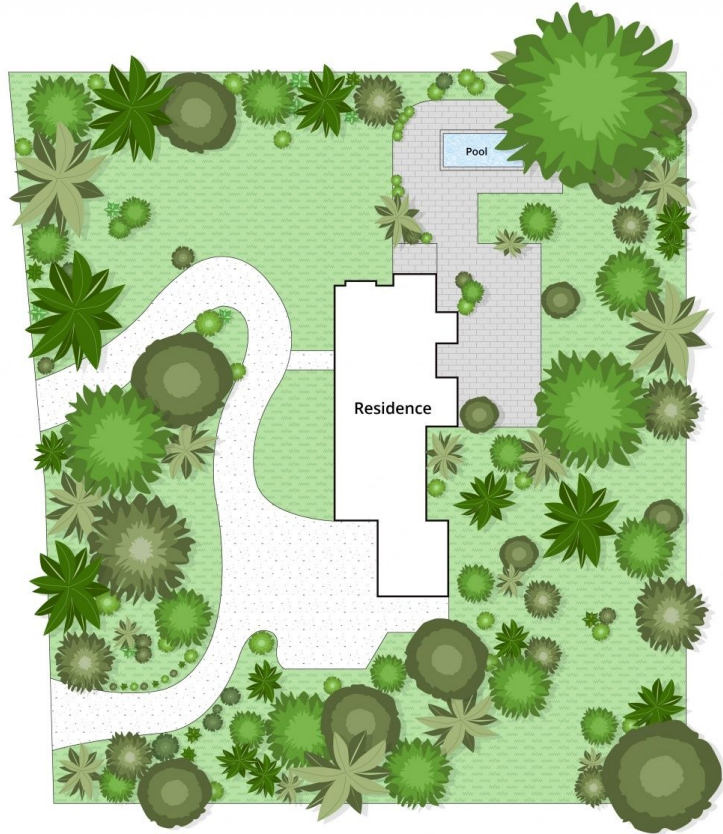
Hidden in the bushland of the prestigious Woodlands Estate, this enchanting property offers peaceful privacy on just over an acre, with calming rural vistas to relax and unwind. Complete with a charming 4 bedroom homestead surrounded by colourful gardens and gums, this lifestyle property is proof that you can live your rural dream - right here on the coast!

- Set on 4472m² (approx.) in the prestigious 'Woodlands' estate only 5 mins to the town centre
- 4 bedroom home offering multiple living zones across a versatile family floorplan
- Tranquil privacy only a rural setting can offer, with leafy aspects enjoyed from every room
- A wraparound veranda adds rustic charm and shields the home from the summer sun
- Spacious formal lounge upon entry, with an open fireplace and hearth as its centrepiece
- Second sitting area with access to outside could serve well as a children's play or study zone
- Custom chef's kitchen with soft close drawers and colourful garden outlook is a real highlight
- Quality ILVE and Miele appliances, stone benchtops and

Price : \$ 1,062,500
Land Size : 4472 sqm
View : <https://www.bellarineproperty.com.au/4115299>



Dan Halsey
03 5254 3100



Whilst bwrn.com.au has made every attempt to ensure the accuracy of the floor plan contained here, measurements are approximate and no responsibility is taken for any error, omission, or mis-statement. This plan is for illustrative purposes only.

6 Sylvan Lane, Ocean Grove

bellarine  property